

CAMBRO

Camshelving®

Wall Shelf

2 Shelf Lengths, 2 Shelf Widths

36" (91 cm) long	36" (91 cm) long
18" (46 cm) wide	14" (36 cm) wide
Model CSWS1836SK	Models CSWS1436SK, CSWS1436VK
48" (122 cm) long	48" (122 cm) long
18" (46 cm) wide	14" (36 cm) wide
Model CSWS1848SK	Models CSWS1448SK, CSWS1448VK

StoreSafe®

• Wall Shelf Kit includes:

- One solid shelf or one vented shelf
- Two supports
- Hardware with installation instructions

Features & Benefits

Easy to Clean

The shelf is designed to snap on and off so that it can be easily removed. Once removed, shelf can be thoroughly cleaned in a pot sink or in a conveyor type warewasher.

Molded in backsplash and non-drip marine rail front edge ensure cleanability.

Rust Free

The polypropylene shelf and brackets are weldless and rustproof. Wall shelves are backed by a lifetime limited warranty against rust and corrosion.

Easy to Install

Assembles in minutes with a minimum of tools.

Cambro's unique snap fit design makes it easier for the installer to align the supports with a stud. Simply mount the supports into wall studs and snap on the shelf.

Detailed instructions are provided for installation.

Strong

Cambro's unique I-beam shelf supports are virtually indestructible. Polypropylene construction can support up to 150 lbs. (68 kg).

Versatile Storage

For use in any environment indoors or outdoors, including wet locations. Designed to function in the most demanding foodservice environments withstanding temperatures as low as -36°F (-38°C) or temperatures up to 190°F (88°C).

NSF Approved

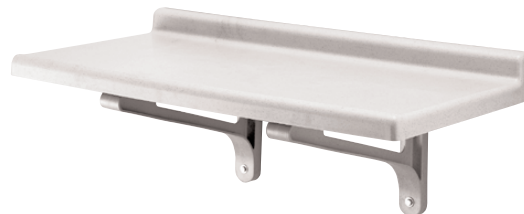
The NSF approval is your assurance that this product is easy to clean and excels as part of a HACCP environment.

Item No. _____

Specifier Identification No. _____

Code No. _____

Quantity _____



36" Wall Shelf, Solid



48" Wall Shelf, Solid



36" Wall Shelf, Vented



48" Wall Shelf, Vented

Approvals



Components

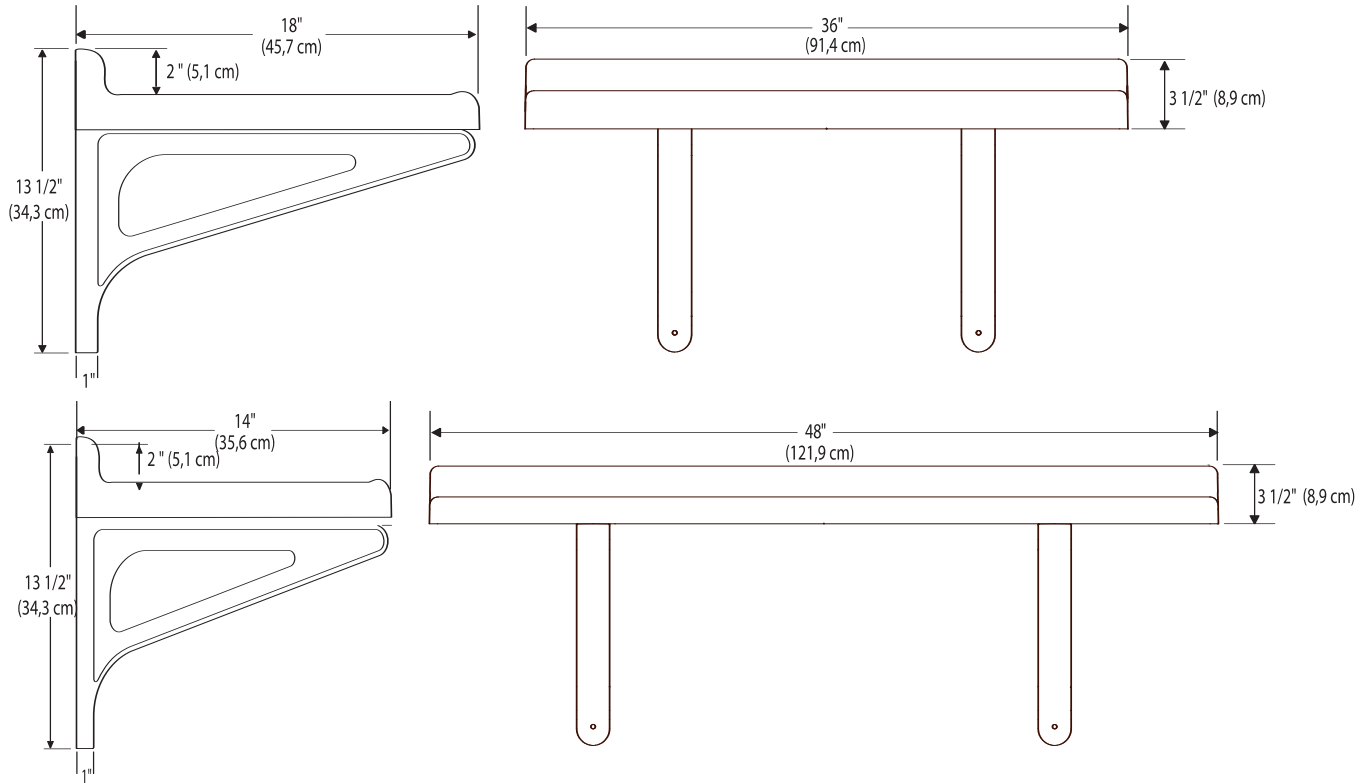
CAMBRO
MANUFACTURING COMPANY
www.cambro.com

© 2006 Cambro Manufacturing Company 5801 Skylab Road, Huntington Beach, California 92647-2056-U.S.A.
Telephone (1)714 848 1555 Toll Free 800 854 7631 Customer Service Hot Line 800 833 3003
LIT CS-0406REV

Wall Shelf

2 Shelf Lengths, 2 Shelf Widths

36" (91 cm) long	36" (91 cm) long
18" (46 cm) wide	14" (36 cm) wide
Model CSWS1836SK	Models CSWS1436SK, CSWS1436VK
48" (122 cm) long	48" (122 cm) long
18" (46 cm) wide	14" (36 cm) wide
Model CSWS1848SK	Models CSWS1448SK, CSWS1448VK



Specifications

Dimension Tolerance: +/- 1/4" (0,64 cm)

Code	Description	Load Capacity	Exterior Dimensions L x W x H	Case lbs./cube Kg/m³
CSWS1836SK	Wall Shelf, Solid	150 lbs. (68 Kg.)	36" x 18" x 13 1/2" (91,4 x 45,7 x 34,3 cm)	13 (1.71) 5,9 (0,05)
CSWS1848SK	Wall Shelf, Solid	150 lbs. (68 Kg.)	48" x 18" x 13 1/2" (121,9 x 45,7 x 34,3 cm)	15 (2.10) 6,8 (0,06)
CSWS1436SK	Wall Shelf, Solid	150 lbs. (68 Kg.)	36" x 14" x 13 1/2" (91,4 x 35,6 x 34,3 cm)	10 (1.31) 4,6 (0,04)
CSWS1436VK	Wall Shelf, Vented	150 lbs. (68 Kg.)	36" x 14" x 13 1/2" (91,4 x 35,6 x 34,3 cm)	9 1/2 (1.31) 4,4 (0,04)
CSWS1448SK	Wall Shelf, Solid	150 lbs. (68 Kg.)	48" x 14" x 13 1/2" (121,9 x 35,6 x 34,3 cm)	12 1/2 (1.73) 5,7 (0,05)
CSWS1448VK	Wall Shelf, Vented	150 lbs. (68 Kg.)	48" x 14" x 13 1/2" (121,9 x 35,6 x 34,3 cm)	11 1/2 (1.73) 5,3 (0,05)

Architect Specs

The Camshelving® Wall Shelves shall be Cambro models..., manufactured by Cambro Mfg. Co., Huntington Beach, CA 92647. Each unit shall be constructed of one piece seamless speckled gray polypropylene, and shall be available in solid or vented design. Each unit shall come with two reinforced nylon I-beam supports and all necessary hardware. Units will not rust or corrode. Unit load capacity will be 150 lbs. (68 kg).

Standard Colors

☐ Speckled Gray (480)

Approvals



Components