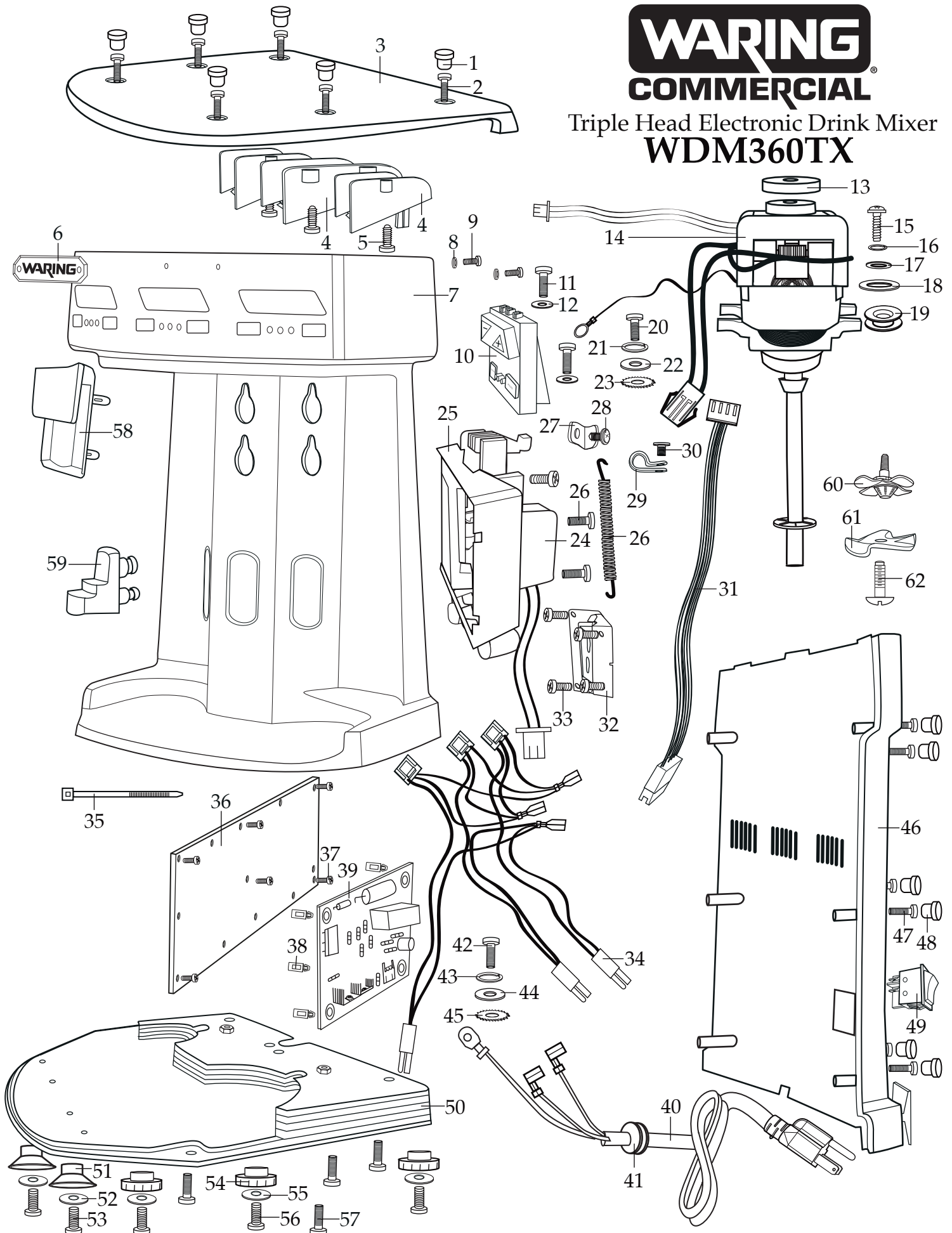


WARING COMMERCIAL

Triple Head Electronic Drink Mixer WDM360TX



| Illustration# | Part# | Description |
|----------------------|------------------|--|
| 1 | 037532 | Hole Plugs (6 required) |
| 2 | 033901 | Screw (6 required) |
| 3 | 037891 | Top Cover with Air Guards |
| 4 | 037126 037892 | Small Air Guards (2 required) Large Air Guard |
| 5 | 033886 | Screw (2 required per small air guard) (4 required per large air guard) |
| 6 | 030689 | Name Plate |
| 7 | 037893 | Housing with Name Plate |
| 8 | 030690 | Washer (2 required) |
| 9 | 030691 | Screw (2 required) |
| 10 | 037535 | Control Panel (3 required) |
| 11 | 030706 | Screw (2 required per control panel) |
| 12 | 037536 | Fiber Washer (2 required per control panel) |
| 13 | 030694 | Top Motor Mount (1 per motor) |
| 14 | 037547 | Motor (3 required) |
| 15 | 037548 | Screw (2 required per motor) |
| 16 | 030714 | Spring Washer (2 required per motor) |
| 17 | 030696 | Washer (2 required per motor) |
| 18 | 033697 | Large Washer (2 required per motor) |
| 19 | 037894 | Side Motor Mounts (2 required per motor) |
| 20 | 030706 | Screw (1 required per motor) |
| 21 | 030714 | Spring Washer (1 required per motor) |
| 22 | 037549 | Washer (1 required per motor) |
| 23 | 030707 | Lock Washer (1 required per motor) |
| 24 | 037648 | Actuator Switch Assembly (3 required) |
| 25 | 037649 | Actuator Switch Bracket (2 required) |
| 26 | 030706 | Screw (3 required per actuator switch bracket) |
| 27 | 037654 | Bracket |
| 28 | 037655 | Screw |
| 29 | 036039 | Lead Clamp |
| 30 | 037653 | Screw |
| 31 | 037540 | Lead Tape (1 required per control panel) |

Catalog/Model

WDM360TX



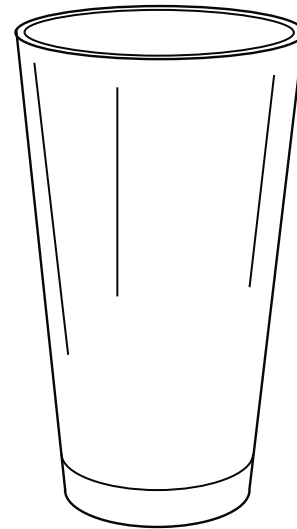
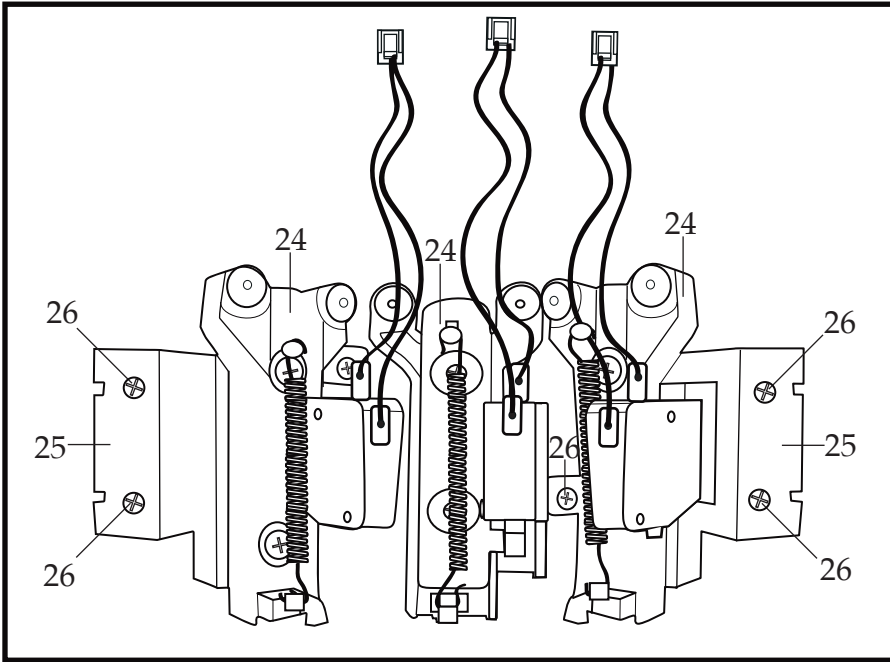
| Illustration# | Part# | Description |
|----------------------|--------------|---|
| 32 | 037650 | Cup Support Locking Bracket (2 required) |
| 33 | 030706 | Screw (4 required per cup support locking bracket) |
| 34 | 037895 | Lead Harness |
| 35 | 013791 | Wire Ties (12 required) |
| 36 | 037542 | Power Board Holder (3 required) |
| 37 | 037543 | Screw (6 required for 2 power board holders) (3 required for 1 power board holder) |
| 38 | 033881 | Press Lock Stand Offs (4 required per power board) |
| 39 | 037544 | Power Board (3 required) |
| 40 | 037551 | Cord |
| 41 | 031984 | Strain Relief |
| 42 | 033901 | Screw (cord ground) |
| 43 | 030714 | Spring Washer |
| 44 | 030696 | Washer |
| 45 | 030707 | Lock Washer |
| 46 | 037896 | Back Plate |
| 47 | 033901 | Screw (6 required) |
| 48 | 037532 | Hole Plugs (6 required) |
| 49 | 037553 | On/Off Rocker Switch |
| 50 | 037897 | Bottom Plate with Weights |
| 51 | 030719 | Suction Cup Feet (2 required) |
| 52 | 030696 | Washer (2 required) |
| 53 | 030706 | Screw (2 required) |
| 54 | 030046 | Feet (4 required) |
| 55 | 030696 | Washer (4 required) |
| 56 | 030706 | Screw (4 required) |
| 57 | 033901 | Screw (4 required) |
| 58 | 037555 | Cup Actuator (3 required) |
| 59 | 037556 | Cup Support (3 required) |
| 60 | 029292 | Butterfly Agitator (3 required) |
| 61 | 030715 | Solid Disk Agitator (3 required) |
| 62 | 029291 | Screw (3 required) |
| 63 | 037651 | Cup Support Locking Assembly (3 required) |
| 64 | 031981 | Screw (2 required on left and right cup support locking assembly) |

Catalog/Model

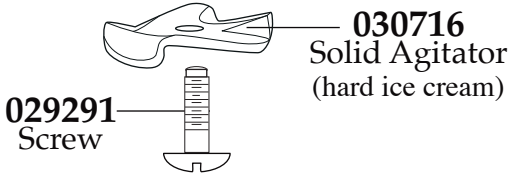
WDM360TX

Waring Factory Service Center
 314 Ella T. Grasso Ave.
 Torrington, CT 06790
 Tele. 1-800-269-6640
 Fax 860-496-9017
 www.waringcommercialproducts.com

Looking into unit with back cover off at the actuator switch assemblies.

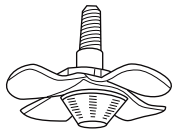


030883
Container



030716
Solid Agitator
(hard ice cream)

029291
Screw



029292
Butterfly Agitator
(soft ice cream)

Looking into unit with back cover off at Cup Support Locking Assemblies.

