



Item No. _____

Quantity _____

Model No.
6100A, 6101A, 6102A, 6103A,
6110A, 6120A, 6120A-CW
COUNTERTOP WARMERS
and COOKER / WARMERS



6100A



6120A

NEMCO'S countertop warmers and cooker/warmers add flexibility while helping you keep food within cooking and serving temperature guidelines. Unique heating element design provides even distribution to prevent "hot spots". They also come with a "No Drip Rim". Twin warmers have separate thermostats and balanced heat systems for maximum control and convenience. Heavy-duty stainless steel well ensures durability and long life. Attractive enough for serving lines, round warmers keep soups, gravies, BBQ sauce and dessert toppings warm and appetizing. Great for the back bar too.

Standard Features:

- Heavy duty stainless steel well
- No drip rim
- Coiled tubular heating element
- Adjustable thermostat (low, med & high)
- 120 & 220 Volt models have cETLus & NSF listing
- 230 Volt models have CE & NSF listing

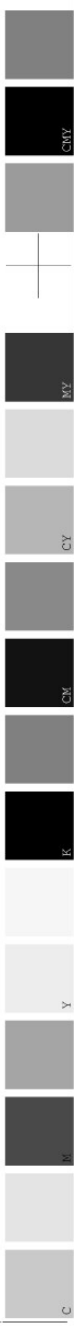


NEMCO Food Equipment, Ltd.
 301 Meuse Argonne
 P.O. Box 305
 Hicksville, OH 43526
 Phone (419) 542-7751
 FAX (419) 542-6690
www.nemcofoodequip.com

Accessories:

- 66088-2 inset, cover & ladle (4 quart)
- 66088-8 inset, cover & ladle (7 quart)
- 66088-10 inset, cover & ladle (11 quart)

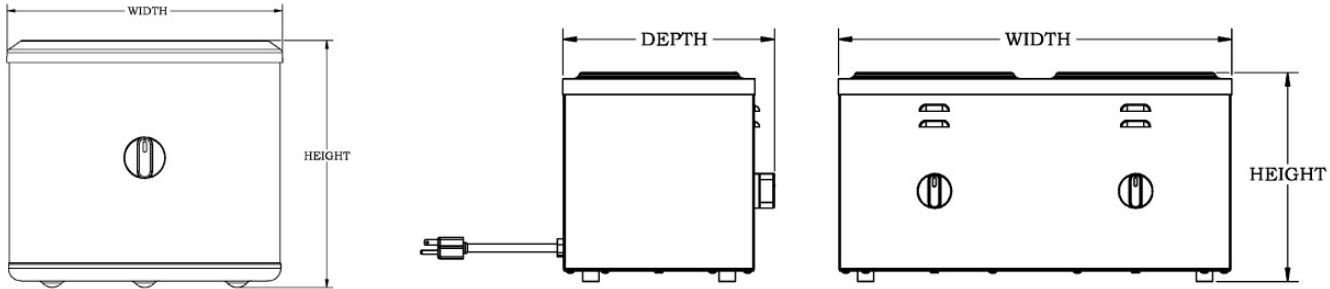
\\rampagedata\job\vol\22135\page Files to Rip\22135\FB.pdf Last Modification: D:20110915163240-05'00' Creation Date: D:20110915163240-05'00'
 2400.0 dpi (Screened Data File POS, Right-Reading, Mono, Std-OPV Simulated Spot Colors) [ABO:100 Scaling Percent: HT:100 WD:100 \rsal\lut\ G:175845] bleed: 0.125 margin size: 0.375
 Color: Magenta Black
 PS Version: 3015.102 HQN Version 8.3 Revision 1 RSL, Ripped on Thursday, September 15, 2011 4:32:45 PM
 ID: Lvmm:





Countertop Warmers and Cooker / Warmers

Model No. 6100A, 6101A, 6102A, 6103A, 6110A, 6120A, 6120A-CW



AIA File No.

Specifications

Model No.	Width Inches/(cm)	Depth Inches/(cm)	Height Inches/(cm)	Volts	Rated Wattage	Nominal Amps	NEMA Plug	Actual Weight lbs./ (Kg)	Shipping Weight lbs. / (Kg)
6100A (7 Qt.) 6100A-220 6100A-230	11 7/8 (30.1) diameter	-	9 3/4 (24.8)	120 220 230	550 550 550	4.6 2.5 2.4	5-15P 6-15P CEE 7-7	6 1/2 (2.9)	11 (5.0)
6101A (11 Qt.) 6101A-220 6101A-230	13 3/4 (35.0) diameter	-	9 3/4 (24.8)	120 220 230	750 750 750	6.3 3.4 3.3	5-15P 6-15P CEE 7-7	8 (3.6)	12 1/2 (5.7)
6102A (7 Qt.) 6102A-220 6102A-230	11 7/8 (30.1) diameter	-	9 3/4 (24.8)	120 220 230	1050 1050 1050	8.8 4.8 4.6	5-15P 6-15P CEE 7-7	8 (3.6)	12 (5.4)
6103A (11 Qt.) 6103A-220 6103A-230	13 3/4 (35.0) diameter	-	9 3/4 (24.8)	120 220 230	1250 1250 1250	10.4 5.7 5.4	5-15P 6-15P CEE 7-7	9 (4.1)	13 1/2 (6.1)
6110A (4 Qt.) 6110A-220 6110A-230	8 7/8 (22.3)	8 (20.3)	9 7/8 (25.1)	120 220 230	350 350 350	2.9 1.6 1.5	5-15P 6-15P CEE 7-7	7 (3.2)	11 (5.0)
6120A (2 - 4 Qt. wells) 6120A-220 6120A-230	18 5/8 (47.3)	10 3/8 (26.4)	9 7/8 (25.1)	120 220 230	350 per well 350 per well 350 per well	5.8 3.2 3.0	5-15P 6-15P CEE 7-7	13 1/2 (6.1)	18 (8.2)
6120A-CW (2 - 4 Qt. wells) 6120A-CW-220 6120A-CW-230	18 5/8 (47.3)	10 3/8 (26.4)	9 7/8 (25.1)	120 220 230	500 per well 500 per well 500 per well	8.3 4.5 4.3	5-15P 6-15P CEE 7-7	13 1/2 (6.1)	18 (8.2)

TYPICAL SPECIFICATIONS

NEMCO countertop warmers and cooker / warmers shall be constructed with 300 series stainless steel wells and 400 series stainless steel exterior. They shall have coiled tubular heating elements attached to an aluminum heat dissipator plate. All models shall have an adjustable (up to 212° F) conduction thermostat. 120 Volt models shall have a 6' cord and NEMA 5-15P plug, 220 Volt models shall have a 3.5' cord and NEMA 6-15P plug, and the 230 Volt models shall have a 8.2' cord and CEE 7-7 plug. All 120 & 220 Volt models shall be United States and Canadian ETL certified and National Sanitation Foundation listed. All 230 Volt models shall be National Sanitation Foundation listed and CE certified.



NEMCO Food Equipment, Ltd.
301 Meuse Argonne, P.O. Box 305
Hicksville, OH 43526
Phone (419) 542-7751
FAX (419) 542-6690
www.nemcofoodequip.com

Made in U.S.A.

9/11 Printed in U.S.A.

\\ramagedata\job_vol\22135\Page Files to Rip\22135\FB.pdf Last Modification: D:20110915163245-05:00' Creation Date: D:20110915163245-05:00' bleed: 0.125 margin size: 0.375
 2400.0 dpi (Screened Data File POS, Right-Reading, Mono, Std-Over Simulated Spot Colors) [ABO:100 Scaling Percent: HT:100 WD:100 \rsd\lut\ G:175845]
 Color: Magenta Black
 PS Version: 3015.102 HQN Version 8.3 Revision 1 RSL, Ripped on Thursday, September 15, 2011 4:32:54 PM
 ID: LVm: