

# Lettuce King™

MANUAL FOOD PROCESSORS

 **Lincoln**

Save prep time while maintaining consistency

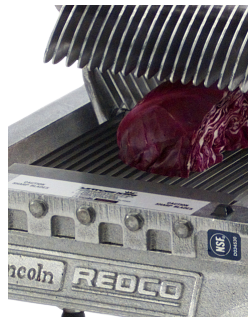


# Lettuce King™

Lettuce King™ IV shown with optional drum ring



The Redco® Lettuce King™ saves prep time and streamlines handling for high-volume slicing and dicing of many vegetables. When using the Lincoln Redco® Lettuce King™ I, you'll achieve great results with bell peppers, onions, cucumbers, cabbage, lettuce and more. Vegetables can be sliced or diced consistently for salads, sandwiches, pizzas, stir-fry and all types of dishes. The Lettuce King™ IV will chop an entire head of lettuce into 1" x 1" squares for perfect salads with one stroke.



## FEATURES

## ADVANTAGES

## BENEFITS

Simple to Operate.	Minimal training required.	Keeps your skilled staff doing more challenging tasks.
Smooth, simple, one-stroke action.	Complies with most state labor laws.	More production from the same amount of staff.
1/5 the cost of electric slicers.	Keeps capital costs lower.	Better bottom line for you at the end of the year.
Manual operation.	Slices five-times faster than cutting by hand.	Easier to clean, safer to use.
Rapid, accurate quick-cutting action.	Reduced food damage and bruising.	More beautiful portions, yielding less waste.

### Redco® Lettuce King™ I

Cat No.	Description	Blade Assembly
400N	3/16" Cut Lettuce King™ I	435 (37 Blades)
401N	3/4" Cut Lettuce King™ I	434 (10 Blades)
402NC	3/8" Cut Lettuce King™ I	484 (19 Blades)
403N	1/4" Cut Lettuce King™ I	485 (28 Blades)

### Redco® Lettuce King™ IV Optional Drum Ring

Saves prep time and streamlines handling for high-volume chopping of lettuces. Fits snugly over Rubbermaid® Greenskeeper™ storage drums. Use with the Lincoln Redco® Lettuce King™ IV for consistent performance and chopping efficiency.

### Redco® Lettuce King™ IV

Cat No.	Description	Blade Assembly	Cat No.	Description	Dimensions
4400N	1" Cut Lettuce King™ IV	4408	2900	Drum Ring	22 3/4" x 17/8"



Lettuce King™ I



For more information

Call 1-888-417-LINC (5462) or visit

[www.lincolnfp.com](http://www.lincolnfp.com)

1111 North Hadley Road, P.O. Box 1229

Fort Wayne, IN 46801-1229, USA

260-459-8200, fax 260-436-0735

720 | 2.5K | 0706 | SP

