

Mobile Self-Leveling Cabinets

Non-Heated Stainless Steel



Model 5209

Easy field adjustment for plate dispensing height - no tools required

Benefits

- Models available to fit plates from 5" (127 mm) to 12 1/4" (311 mm)
- Easy-Glide™ design provides quiet, non-stick operation

Construction

- All-welded stainless steel construction
- Corner bumpers protect cabinet, walls and doors

Casters

- 4" (102 mm) Lake-Glide® casters - all swivel, 2 with brake, extra-load



Specifications

Mobile Cabinet: Mobile cabinets shall be of all-welded stainless steel construction. Cabinets shall have 18-gauge top and 20-gauge sides and bottom and shall include bottom corner bumpers. Cabinet base shall have center clean out hole. Casters shall be 4" (102 mm) diameter extra-load swivel (two with locking brake). Unit shall feature a heavy-duty independent undercarriage frame of galvanized steel to which casters shall be mounted. Units shall be NSF listed.

Dispenser Tubes: Dispenser tubes shall be of welded stainless steel construction and shall drop in to mobile cabinet top openings. Dispensers shall hang from cabinet opening by an 18-gauge flange ring and feature three each 22-gauge vertical side supports welded to 20-gauge bottom plate. Self-leveling dish carriage shall be of welded stainless steel construction and shall travel vertically in dispenser tube with nylon guides for smooth operation. Carriage shall have 22-gauge removable dish platform. Dispensers shall feature flange mounted perimeter extension springs, which are detachable from the dish carriage, to provide adjustment without tools for different weight dishes. Each dispenser shall have a vertical stacking capacity of 25" (635 mm).

Spec. # _____

AIA # _____

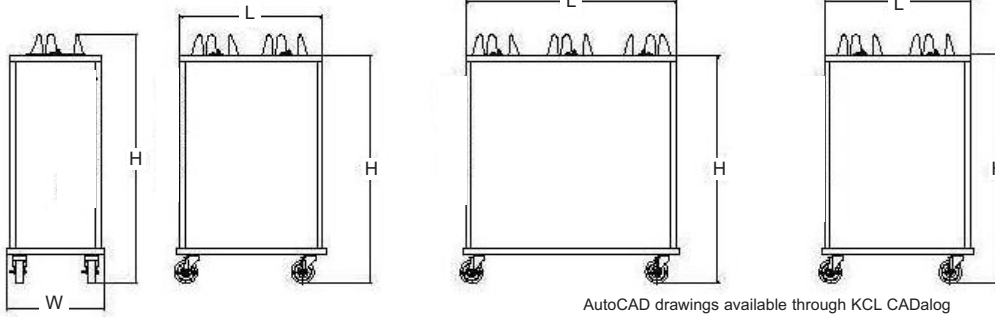


Lakeside Manufacturing, Inc.

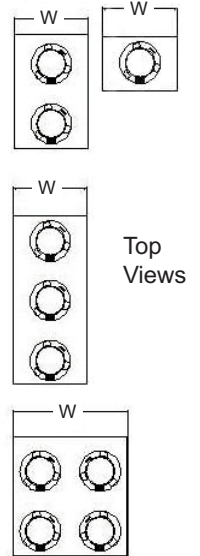
4900 West Electric Avenue • West Milwaukee, WI 53219 U.S.A.
800-558-8565 • 414-902-6400 • Fax 414-902-6446 • www.eLakesideFoodservice.com

Mobile Self-Leveling Cabinets

Non-Heated Stainless Steel



AutoCAD drawings available through KCL CADalog



Optional Accessories

- Stainless steel dispenser covers
- 8" (203 mm) vertical one-piece push handle (not available on four stack models)
- Bottom perimeter bumper

Model Information

Single Stack Models

Model	Accommodates Plate Size	Dimensions			Ship Weight
		W	L	H	
5100	Up to 5" (Up to 127)	18½" (470)	22½" (571)	40" (1013)	74 (33.3 kg)
5105	5-1/8" to 5-3/4" (130 to 146)	18½" (470)	22½" (571)	40" (1013)	74 (33.3 kg)
5106	5-7/8" to 6-1/2" (149 to 165)	18½" (470)	22½" (571)	40" (1013)	76 (34.2 kg)
5107	6-5/8" to 7-1/4" (168 to 184)	18½" (470)	22½" (571)	40" (1013)	79 (35.6 kg)
5108	7-3/8" to 8-1/8" (187 to 206)	18½" (470)	22½" (571)	40" (1013)	85 (38.3 kg)
5109	8-1/4" to 9-1/8" (210 to 232)	18½" (470)	22½" (571)	40" (1013)	87 (39.2 kg)
5110	9-1/4" to 10-1/8" (235 to 257)	18½" (470)	22½" (571)	40" (1013)	89 (40.1 kg)
5111	10-1/4" to 11" (260 to 279)	18½" (470)	22½" (571)	40" (1013)	90 (40.8 kg)
5112	11-1/4" to 12-1/4" (286 to 311)	18½" (470)	22½" (571)	40" (1013)	93 (41.9 kg)

Two Stack Models

Model	Accommodates Plate Size	Dimensions			Ship Weight
		W	L	H	
5200	Up to 5" (Up to 127)	18½" (470)	32" (813)	40" (1013)	83 (37.7 kg)
5205	5-1/8" to 5-3/4" (130 to 146)	18½" (470)	32" (813)	40" (1013)	83 (37.7 kg)
5206	5-7/8" to 6-1/2" (149 to 165)	18½" (470)	32" (813)	40" (1013)	85 (38.6 kg)
5207	6-5/8" to 7-1/4" (168 to 184)	18½" (470)	32" (813)	40" (1013)	87 (39.5 kg)
5208	7-3/8" to 8-1/8" (187 to 206)	18½" (470)	32" (813)	40" (1013)	94 (42.6 kg)
5209	8-1/4" to 9-1/8" (210 to 232)	18½" (470)	32" (813)	40" (1013)	96 (43.6 kg)
5210	9-1/4" to 10-1/8" (235 to 257)	18½" (470)	32" (813)	40" (1013)	98 (44.5 kg)
5211	10-1/4" to 11" (260 to 279)	18½" (470)	32" (813)	40" (1013)	105 (47.6 kg)
5212	11-1/4" to 12-1/4" (286 to 311)	20¾" (527)	36½" (927)	40" (1013)	110 (49.8 kg)

Three Stack Models

Model	Accommodates Plate Size	Dimensions			Ship Weight
		W	L	H	
5300	Up to 5" (Up to 127)	18½" (470)	46½" (1178)	40" (1013)	149 (67.7 kg)
5305	5-1/8" to 5-3/4" (130 to 146)	18½" (470)	46½" (1178)	40" (1013)	149 (67.7 kg)
5306	5-7/8" to 6-1/2" (149 to 165)	18½" (470)	46½" (1178)	40" (1013)	152 (70.5 kg)
5307	6-5/8" to 7-1/4" (168 to 184)	18½" (470)	46½" (1178)	40" (1013)	155 (70.5 kg)
5308	7-3/8" to 8-1/8" (187 to 206)	18½" (470)	46½" (1178)	40" (1013)	163 (74.1 kg)
5309	8-1/4" to 9-1/8" (210 to 232)	18½" (470)	46½" (1178)	40" (1013)	164 (74.6 kg)
5310	9-1/4" to 10-1/8" (235 to 257)	18½" (470)	46½" (1178)	40" (1013)	165 (75.0 kg)

Four Stack Models

Model	Accommodates Plate Size	Dimensions			Ship Weight
		W	L	H	
5400	Up to 5" (Up to 127)	32" (813)	32" (813)	40" (1013)	176 (80.0 kg)
5405	5-1/8" to 5-3/4" (130 to 146)	32" (813)	32" (813)	40" (1013)	176 (80.0 kg)
5406	5-7/8" to 6-1/2" (149 to 165)	32" (813)	32" (813)	40" (1013)	177 (80.5 kg)
5407	6-5/8" to 7-1/4" (168 to 184)	32" (813)	32" (813)	40" (1013)	177 (80.5 kg)
5408	7-3/8" to 8-1/8" (187 to 206)	32" (813)	32" (813)	40" (1013)	178 (80.9 kg)
5409	8-1/4" to 9-1/8" (210 to 232)	32" (813)	32" (813)	40" (1013)	183 (83.2 kg)
5410	9-1/4" to 10-1/8" (235 to 257)	32" (813)	32" (813)	40" (1013)	184 (83.6 kg)

Measurements in () denote metric millimeters, unless otherwise specified.



Lakeside Manufacturing, Inc.

4900 West Electric Avenue • West Milwaukee, WI 53219 U.S.A.

800-558-8565 • 414-902-6400 • Fax 414-902-6446 • www.eLakesideFoodservice.com