

Parts Catalog



SP25

MIXERS

MODEL: SP25 & SPC25

9-28-15

IMPORTANT!

TO EXPEDITE SHIPMENT OF PARTS, ALWAYS SPECIFY MODEL, REV,
PART NUMBER, AND SERIAL NUMBER OF MIXER.

GLOBE FOOD EQUIPMENT COMPANY

2215 East River Road

Dayton, Ohio 45439

Parts Department

Toll Free 1-800-745-6238 • Fax (937) 290-0585

E-Mail: info@globefoodequip.com

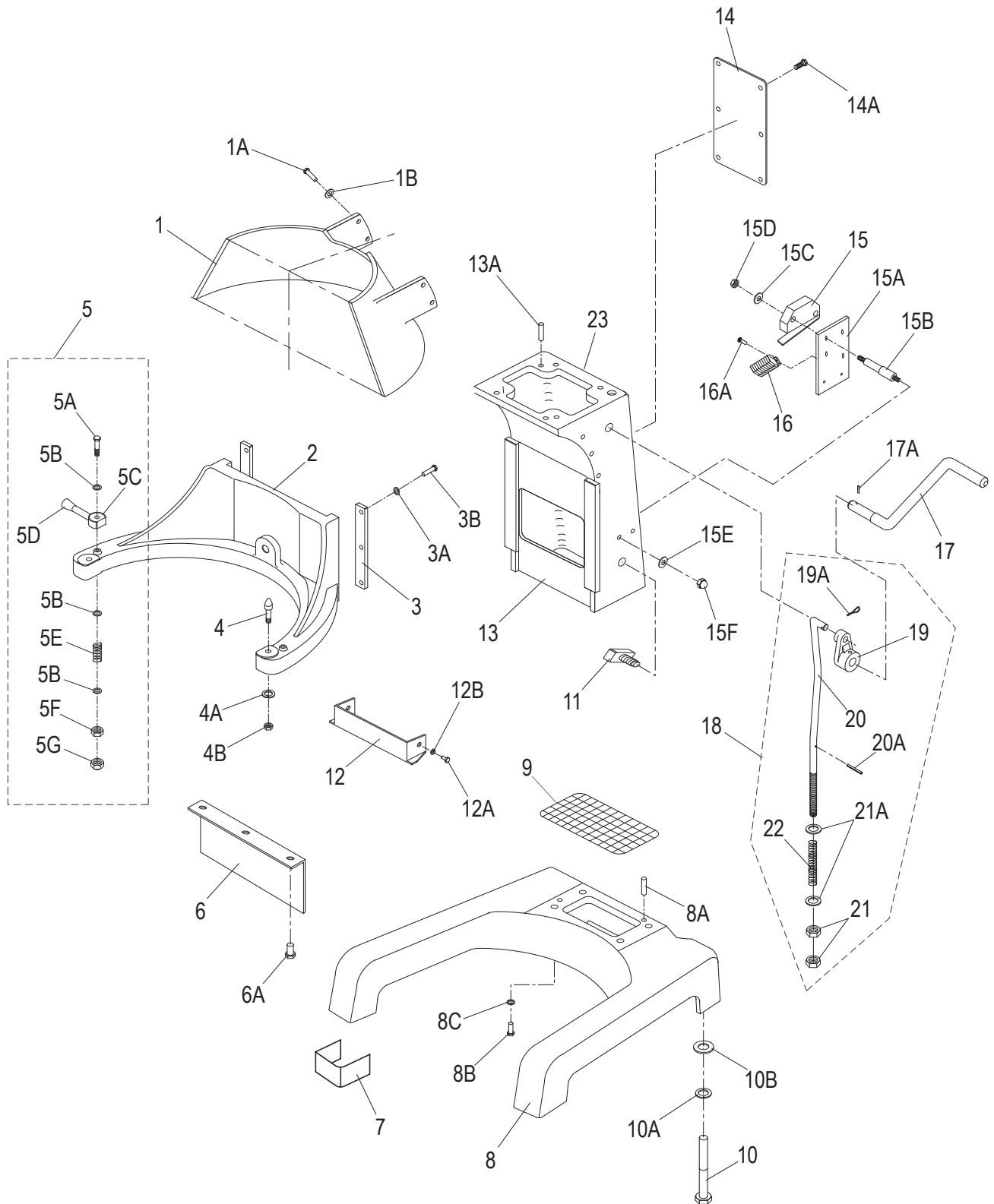
Website: www.globefoodequip.com

Not for resale

TABLE OF CONTENTS

	Page
Base	1 - 2
Head	3 - 4
Planetary	5 - 6
Gears	7 - 8
Motor	9
Motor Brake - SPC Models Only	10
Manual And Digital Timer	11
SP25 Electrical Diagram - Prior	12
SP25 Wiring Diagram - Prior	13
SPC25 Wiring Diagram - Prior	14
SP/SPC25 Wiring Diagram - Post	15

SP25/SPC25 BASE COMPONENTS

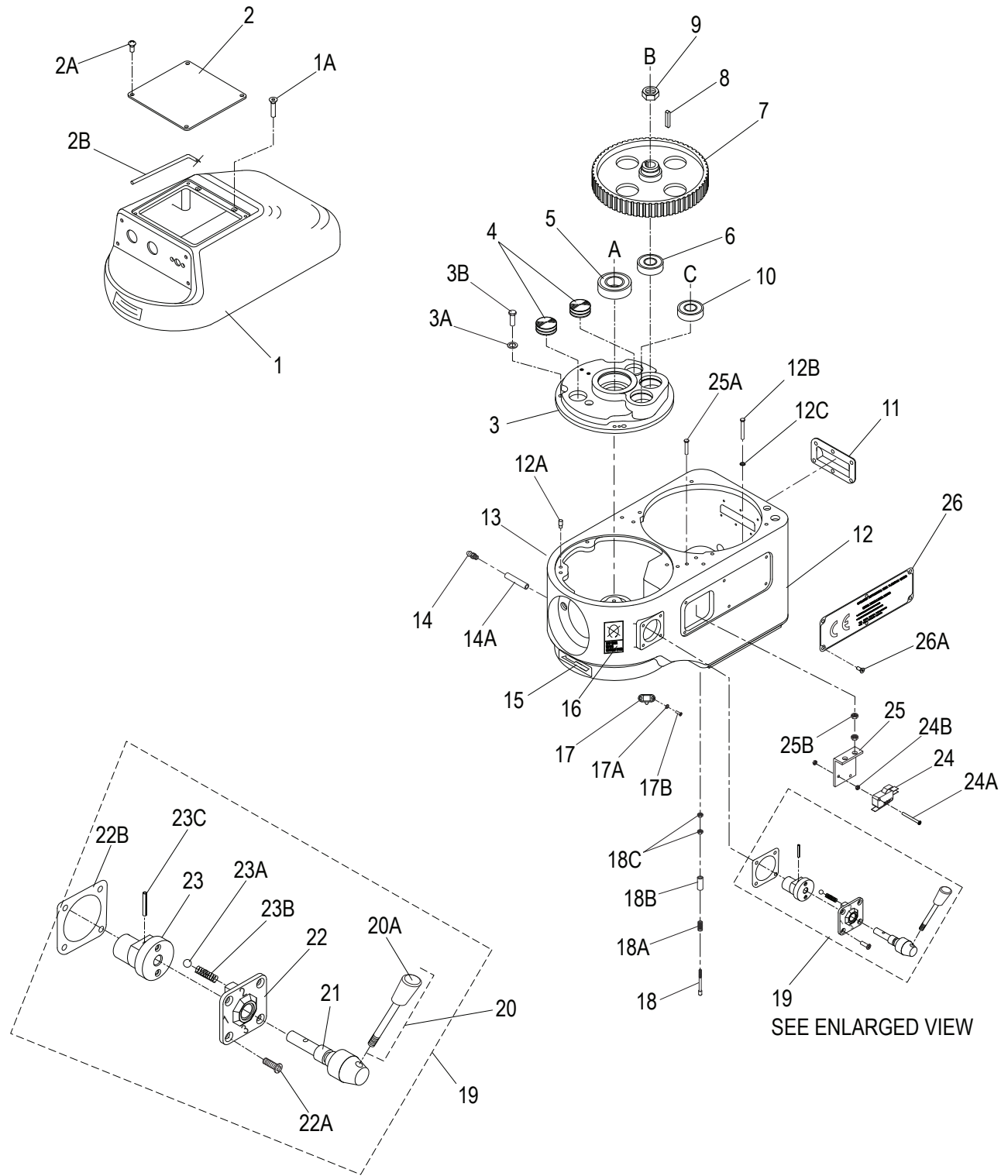


SP25/SPC25 BASE PARTS LIST

Item	Description	Part Number	Qty	Hardware
1	Rear Guard	X25036	1	
1A	Screw, Hex Head	X25097	4	M6x14mm
1B	Washer, Flat	-	4	M6
2	Bowl Cradle	X25034	1	
		*X25034-DG		
3	Cradle Slide Guide	X25035	2	
3A	Washer, Split Lock	-	6	M6
3B	Screw, Hex Head	X25098	6	M6x14mm
4	Dowel Pin, Threaded	X25100	2	
4A	Washer, Split Lock	X25100A	2	M6
4B	Nut, Hex	X25101	2	M6
5	Bowl Clamp Assy (Set/2) (W/Hardware)	X10020	2	
5A	Clamp Screw	-	2	M8x80mm
5B	Washer, Flat	-	4	M8
5C	Bowl Clamp (Set/2)	X10020-1	1	
5D	Clamp Handle	-	2	
5E	Spring	-	2	
5F	Nut, Hex	-	2	M8
5G	Nut, Acorn	-	2	M8
6	Cover, Bowl Cradle	X25149	1	
6A	Screw, Hex Head	X25150	3	M6x14mm
7	Front/Rear Rubber Feet (Set/4)	X25157-158	1	
8	Mixer Base	X25038	1	
		*X25038-DG		
8A	Dowel Pin	-	2	Ø8x16mm
8B	Screw, Hex Head	-	4	M10x40mm
8C	Washer, Flat	-	4	M10
9	Screen, Base	X25037	1	
10	Screw, Hex Head	X25039	4	M10x50mm
10A	Washer, Split Lock	-	4	M10
10B	Washer, Flat	-	4	M10
11	Circuit Breaker	X20027-2	1	
12	Cover, Center Column	X25102	1	
12A	Screw, Hex Head - SS	X25103	2	M6
12B	Washer, Flat	-	2	M6x8mm
13	Mixer Column	X25044	1	
		*X25044-DG		
13A	Dowel Pin	-	2	Ø8x16mm
14	Plate, Rear Cover	X25050	1	
14A	Screw, Truss Head	X25051	6	M5x6mm
15	Microswitch, Bowl Interlock (Raise/Lower)	X25047	1	
	Microswitch, Bowl Interlock - SPC (Raise/Lower)	X25047A		
15A	Bracket, Microswitch Mounting	X25047-1	1	
15B	Standoff	-	2	
15C	Washer, Flat	-	2	M4
15D	Nut, Hex	-	2	M4
15E	Washer, Flat	-	2	M6
15F	Nut, Acorn	-	2	M6
16	Connecting Block	-	1	
16A	Screw, Round Head	-	2	M3x10mm
17	Bowl Lift Lever	X25049	1	
17A	Dowel Pin	X25104	1	Ø5x30mm
18	Bowl Lift Rod Assembly	X25049A	1	
19	Cam, Bowl Lift	X25048	1	
19A	Cotter Pin	-	1	
20	Rod, Bowl Lift	X25046	1	
20A	Roll Pin	X25045	1	Ø3x28mm
21	Nut, Hex	X10032	2	M10
21A	Washer, Flat	X10034	2	M10
22	Spring	X25041	1	
23	Label, Hazardous Voltage (Not Shown)	X91014	1	

*Use after S/N 7511134.

SP25/SPC25 HEAD COMPONENTS

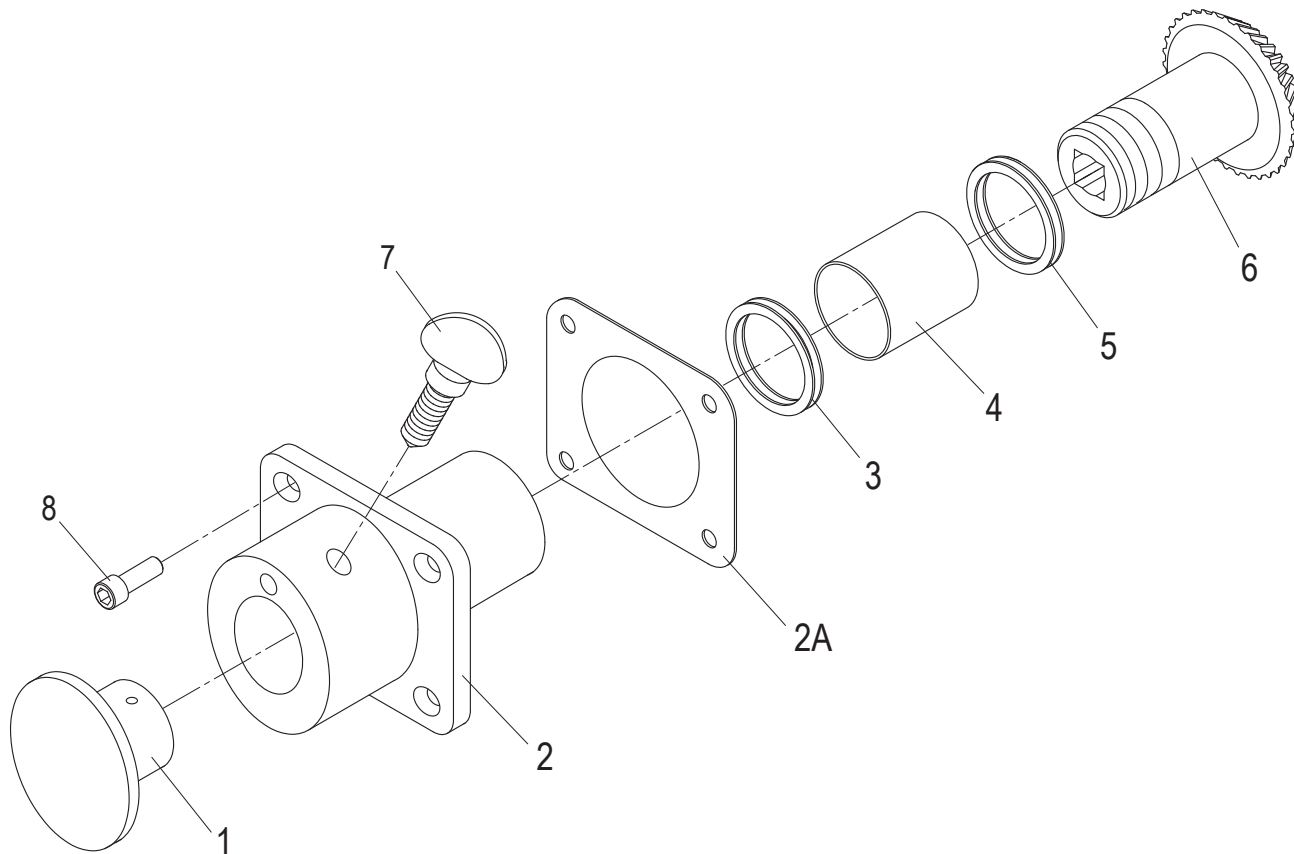


SP25/SPC5 HEAD PARTS LIST

Item	Description	Part Number	Qty	Hardware
1	Cover, Transmission	X25004	1	
	Cover, Transmission	*X25004-DG		
1A	Screw, Flat Head	X25190	2	M6x80mm
2	Cover, Switch Box	X25002	1	
2A	Screw, Truss Head	X25001	4	M5x10mm
2B	Gasket	X25003	1	
3	Cover, Gear Housing	X25072	1	
3A	Washer, Split Lock	-	4	M6
3B	Screw, Hex Head	-	4	M6x16mm
4	Grease Plug	X10073	2	
5	Ball Bearing	X10102	1	
6	Ball Bearing	X25073	1	
7	Wheel, Main Cog	X25075	1	
8	Shaft Key	X25076	1	5x5x27mm
9	Nut, Jam	X25077	1	M16
10	Ball Bearing	X25073	1	
11	Plate, Ventilation	X25071	1	
12	Transmission Case, Fixed Bowl Guard	X25082	1	
	Transmission Case, Removable Bowl Guard	X25082-1		
12A	Dowel Pin, Threaded	-	2	Ø8xM6x10mm
13	Label, Lubricate	X91009	1	
14	Grease Fitting	X10900	1	
14A	Grease Tube	X10217	1	
15	Label, Arrow	X91012	1	
16	Label, Stop To Change Gear	X91010	1	
17	Safety Guard Spring Lock	X10134	1	
17A	Washer, Flat	-	2	M3
17B	Screw, Round Head	-	2	M3x8mm
18	Touch Shaft, Brass	X10043	1	
18	Touch Shaft, Nylon	X10043N	1	
18A	Spring	X10044	1	
18B	Tube	-	1	
18C	Nut, Hex	-	2	M5
19	Gear Shift Lever Assembly	X25052-55	1	
20	Gear Shift Lever With Knob	-	1	
20A	Knob, Gear Shift	X10045-1	1	
21	Shaft	-	1	
22	Cover	-	1	
22A	Screw, Flat Head	X25166	4	M5x20mm
22B	Gasket	X10199	1	
23	Shaft Bias	-	1	
23A	Roller	-	2	
23B	Spring	-	2	
23C	Roll Pin	-	1	Ø3x28mm
24	Microswitch, Bowl Guard Interlock	X10057	1	
	Microswitch, Bowl Guard Interlock - SPC	X10057-1		
24A	Screw, Round Head	-	2	M3x20mm
24B	Hex Nut	-	4	M3
25	Bracket, Microswitch	X10058	1	
25A	Screw, Round Head	-	2	M6x20mm
25B	Nut, Hex	-	4	M6
26	Plate, Warning	X25061	1	
26A	Screw, Pan Head	X25060	6	M4x6mm

*Use after S/N 7511134.

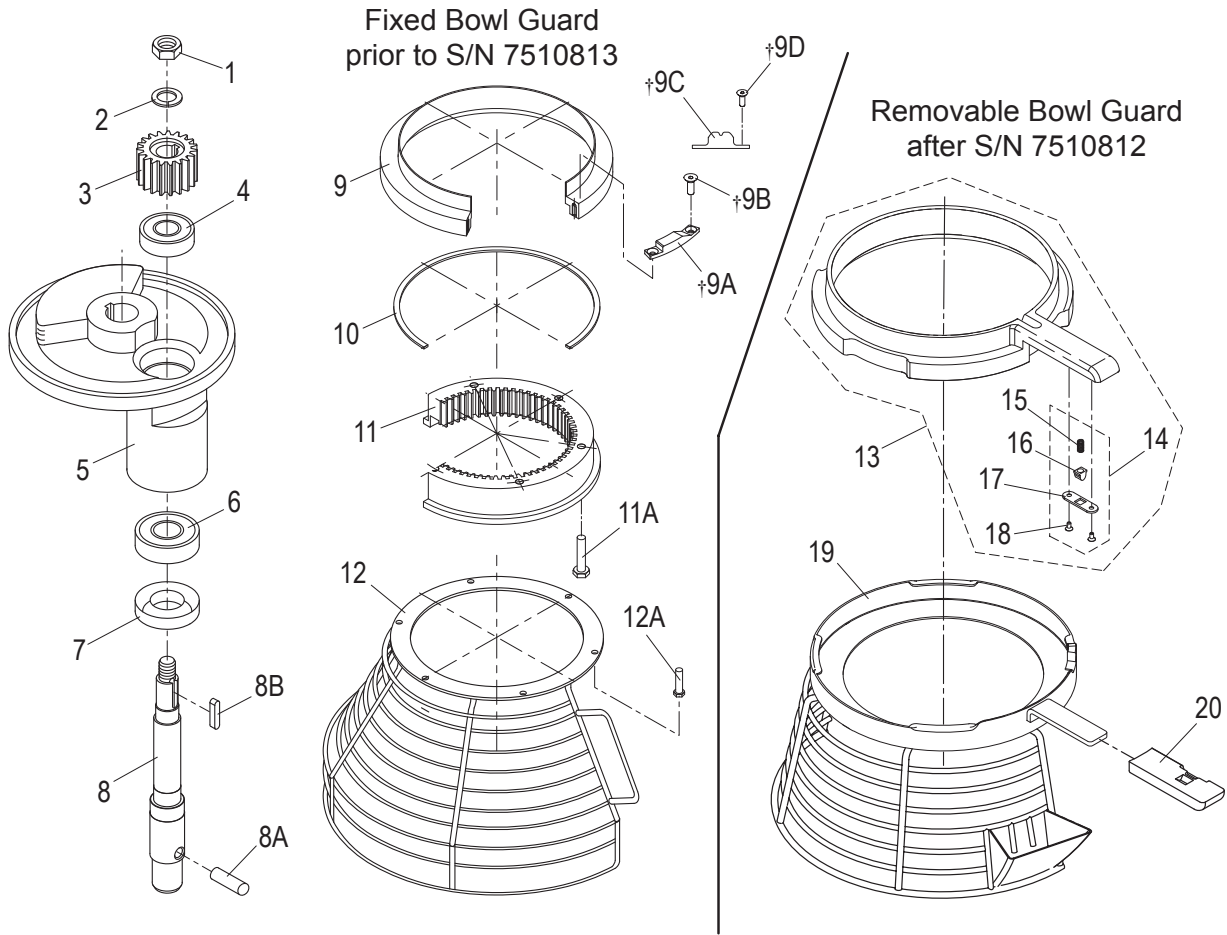
SP25/SPC25 HUB ASSEMBLY COMPONENTS



Item	Description	Part Number	Qty	Hardware
1	Attachment Hole Plug	X10007	1	
2	Attachment Hub (Includes X10004 & X10075)	X25018 *X25018-DG	1	
2A	Gasket	-	1	
3	Oil Seal	X10004	1	
4	Bearing	X10075	1	
5	Thrust Washer	X30018-1	2	
6	Level Drive Gear (35T)	X10003	1	
7	Thumb Screw	X10005	1	1/2-13x3/4"
8	Cap Screw, Socket Head	-	4	M6x25mm

*Use after S/N 7511134.

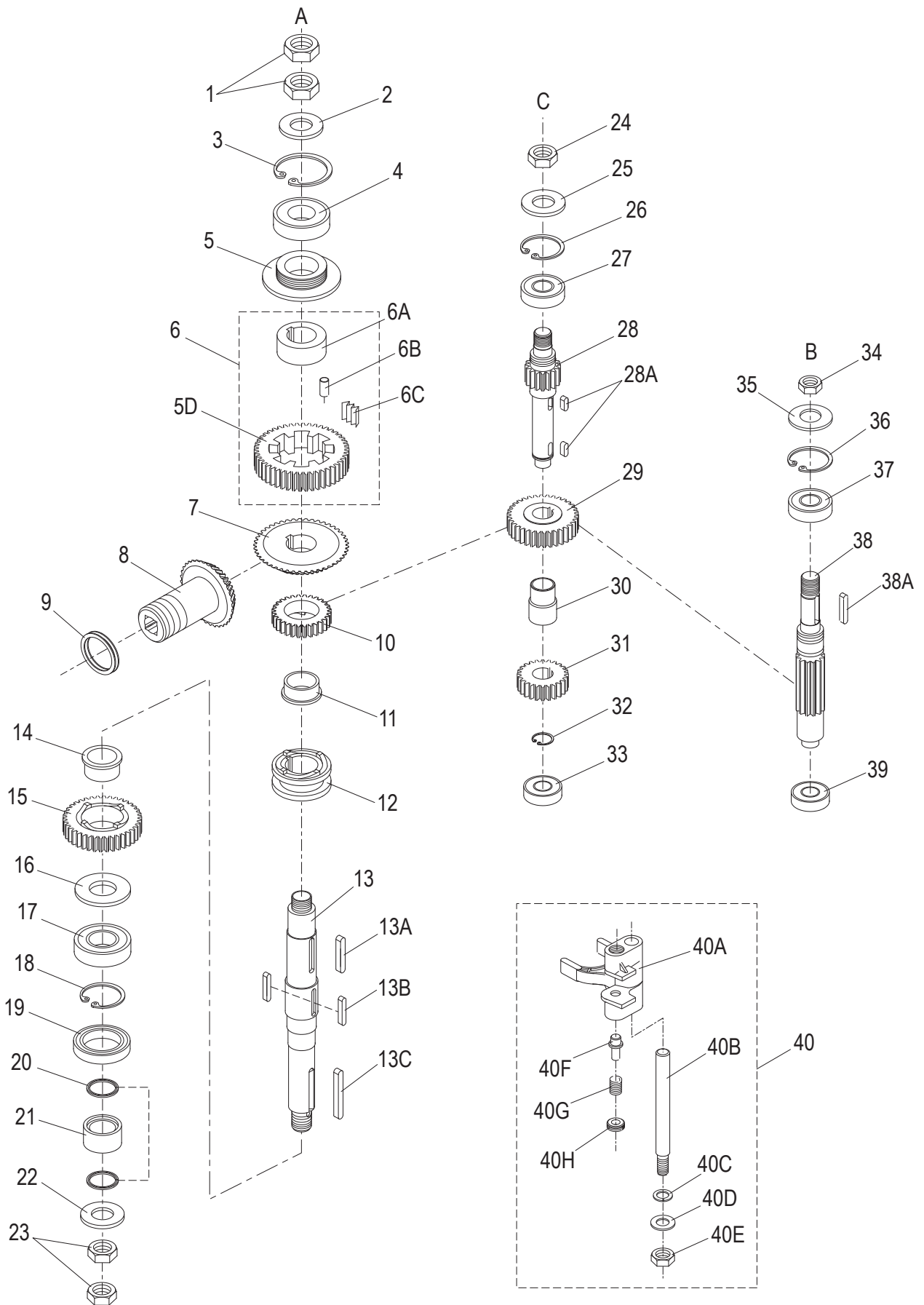
SP25/SPC25 PLANETARY COMPONENTS



Item	Description	Part Number	Qty	Hardware	
1	Nut, Hex	X10008	1	M12	
2	Washer, Split Lock	-	1	M12	
3	Pinion, Beater (19T)	X25021	1		
4	Ball Bearing	X10010	1		
5	Planetary Shaft Holder	X10011	1		
		**X10011-DG			
6	Ball Bearing	X10012	1		
7	Oil Seal	X10013	1		
8	Planetary Shaft	X10015	1		
8A	Dowel Pin	X10080	1		
8B	Shaft Key	X25026	1	5x5x20mm	
9	Slide Sheath, Metal	X10076	1		
	Slide Sheath, Plastic	X10076P			
*9A	Touch Mass	X10041	1		
*9B	Screw, Flat Head	X10042	2	M4x10mm	
*9C	Safety Guard Spring Lock Fixture	X10135	1		
*9D	Screw, Round Head	-	2	M4x10mm	
10	Gasket	X10077	1		
11	Ring Gear (63T)	X25088	1		
11A	Screw, Hex Head	X25095	6	M6x30mm	
12	Front Interlock Guard Assembly	X25089-90	1		
12A	Screw, Hex Head - Locking Patch)	X10083	6	M5x8mm	
13	Plastic Slide Sheath, Removable Safety Guard	X200S2	1		
14	Spring Plunger Hardware Kit	X200S3	1		
15	Spring	-	1	-	
16	Plunger	-	1	-	
17	Plate, Plunger Retention	-	1	-	
18	Screw, Flat Head	-	2	M3x8mm	
19	Bowl Guard Assembly, Stainless Steel	X250S1	1		
20	Handle, Plastic - Removable Safety Guard	X20504	1		

*Used with old style slide sheath (metal) P/N X10076. **Use after S/N 7511134.

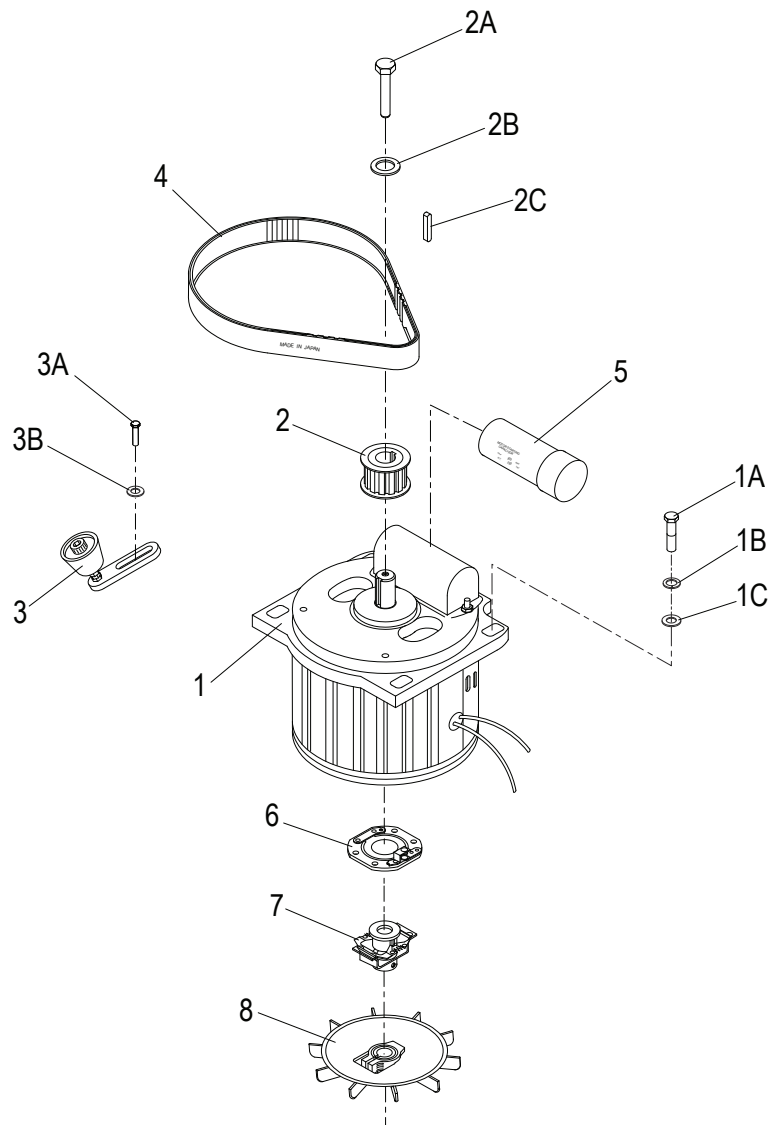
SP25/SPC25 GEARBOX COMPONENTS



SP25/SPC25 GEARBOX PARTS LIST

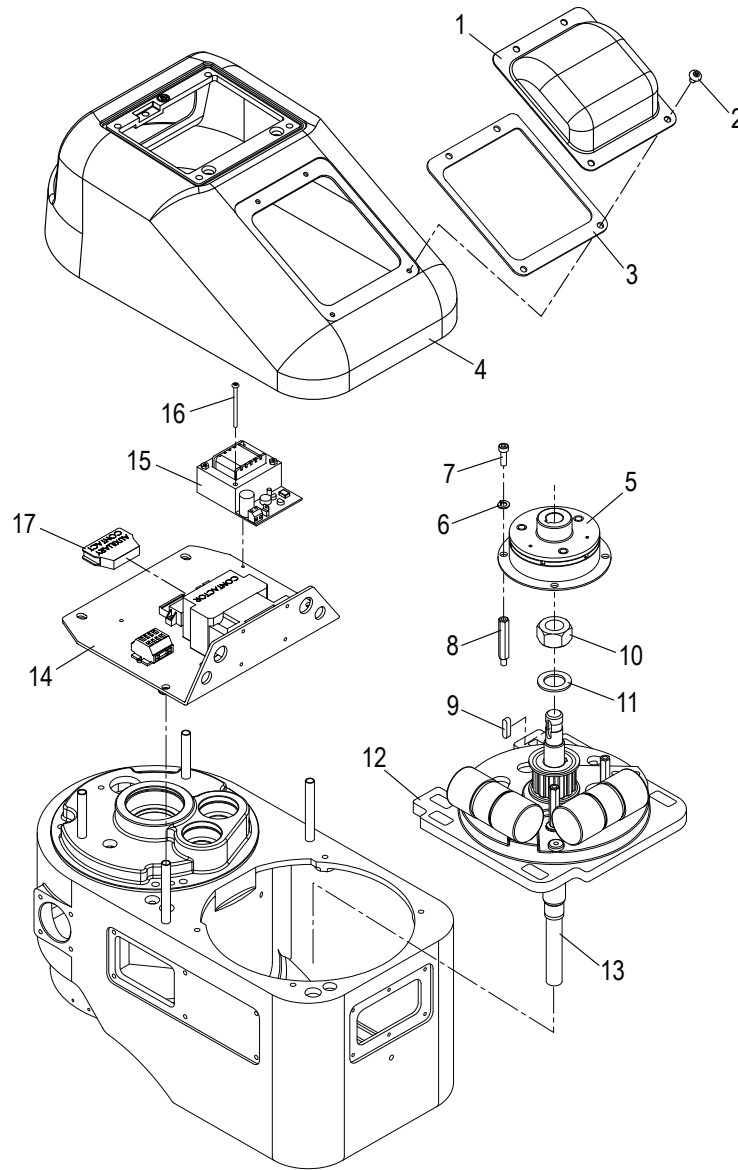
Item	Description	Part Number	Qty	Hardware
1	Nut, Stop	X25105	2	M18
2	Washer, Flat	-	1	M18
3	Retaining Ring	X25106	1	STW-52
4	Ball Bearing	X10102	1	
5	Lead-In Oil Pad	X25107	1	
6	Slow Speed Gear Assembly	X25108-111	1	
6A	Bushing	X25108	1	
6B	Dowel Pin	X25109	1	
6C	Slice Spring	X25110	1	
6D	Gear, Slow Speed (46T)	-	1	
7	Gear, Bevel (46T)	X10095	1	
8	Level Drive Gear (35T)	X10003	1	
9	Thrust Washer	X30018-1	1	
10	Gear, Clutch (28T)	X25113	1	
11	Bushing, Clutch	X10097	1	
12	Sleeve, Clutch	X10110	1	
13	Drive Shaft	X25124	1	
13A	Shaft Key	X25115	1	6x6x27mm
13B	Shaft Key	X25126	2	5x5x27mm
13C	Shaft Key	X25125	1	6x6x45mm
14	Bushing, Clutch	X25116	1	
15	Gear, Clutch (38T)	X25117	1	
16	Washer, Stepped	X25118	1	
17	Ball Bearing	X10102	1	
18	Retaining Ring	-	1	RTW-52
19	Oil Seal	X10105	1	
20	O-Ring	X10103	2	28x22x3mm
21	Guard, Oil Bushing	X25121	1	
22	Washer, Flat	-	1	M20
23	Nut, Jam	X10106	2	M20
24	Hex Nut	X10008	1	M12
25	Washer, Flat	-	1	M12
26	Retaining Ring	X25145	1	STW-35
27	Ball Bearing	X25073	1	
28	Transmission Shaft (15T)	X25144	1	
28A	Shaft Key	X25143	2	5x5x10mm
29	Gear (34T)	X25142	1	
30	Bushing, Spacer	X25138	1	
31	Gear (24T)	X25137	1	
32	Retaining Ring	X10120	1	STW-19
33	Ball Bearing	X25134	1	
34	Nut, Jam	X25141	1	M16
35	Washer, Flat	-	1	M16
36	Retaining Ring	X25140	1	#35
37	Ball Bearing	X25073	1	
38	Shaft, Master (12T)	X25139	1	
38A	Shaft Key	X25076	1	5x5x27mm
39	Ball Bearing	X25134	1	
40	Yoke Shifter Assembly	X25128-133	1	
40A	Yoke, Shifter	-	1	
40B	Guide, Rod Shifter	-	1	
40C	Washer, Split Lock	-	1	3/8"
40D	Washer, Flat	-	1	3/8"
40E	Nut, Stop	-	1	3/8-16
40F	Plunger, Yoke Shifter	-	1	
40G	Spring, Yoke Shifter	-	1	
40H	Spring Retainer	-	1	

SP25/SPC25 MOTOR COMPONENTS



Item	Description	Part Number	Qty	Hardware
1	Motor, 3/4 HP 120/60/1	X25063	1	
	Motor, 3/4 HP 120/60/1 - Mtr Brake	X25063C		
1A	Screw, Hex Head	X25064	4	M6x24mm
1B	Washer, Split Lock	-	4	M6
1C	Washer, Flat	-	4	M6
2	Wheel, Motor Cog (15T)	X25066	1	
2A	Screw, Hex Head	X25070	1	M6x24mm
2B	Washer, Flat	X25069	2	M6
2C	Shaft Key	X25068	1	5x5x25mm
3	Belt Tensioner	X25147	1	
3A	Screw, Hex Head	X25148	2	M8x24mm
3B	Washer, Flat	-	2	M8
4	Belt 255L - Old Style	X25067-1	1	
	Belt 259L - Old Style	X25067-2	1	
	Belt 263L (Ser # 7510056)	X25067-3	1	
5	Capacitor, Start 300MF	X20026	1	
6	Switch, Platinum	X10051	1	
7	Clutch	X25059	1	
8	Cooling Fan	X25056	1	

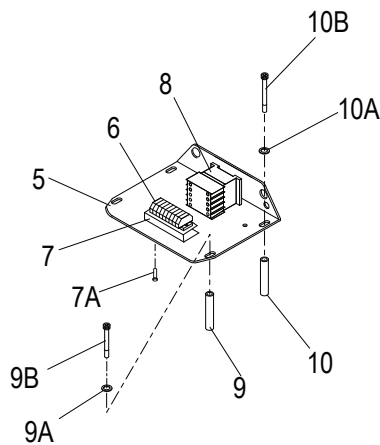
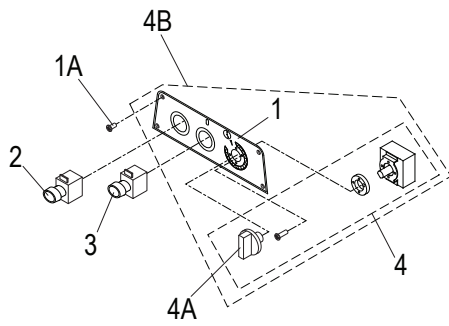
SPC25 MOTOR BRAKE COMPONENTS



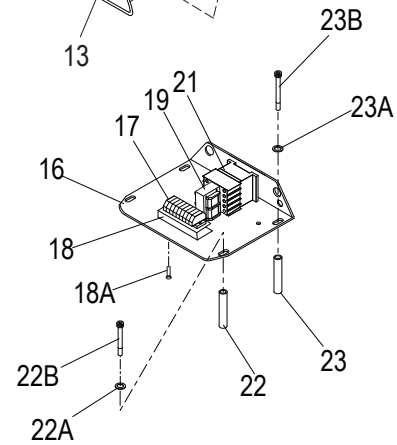
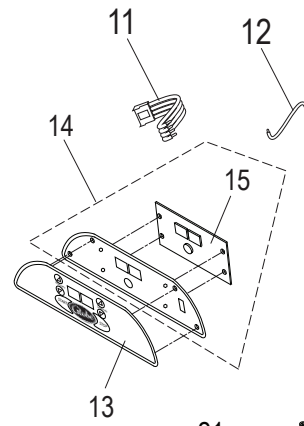
Item	Description	Part Number	Qty	Hardware
1	Cover, Motor Brake Components	X25500	1	
2	Screw, Button Head	-	4	M5x10mm
3	Gasket	X25500-1	1	
4	Transmission Cover, Motor Brake Version	X25004-1	1	
5	Motor Brake, Magnetic	X25501	1	
6	Washer, Split Lock	-	4	M5
7	Cap Screw, Socket Head	-	4	M5x12mm
8	Hex Standoff	X25502	4	
9	Shaft Key	-	1	5x5x20mm
10	Hex Nut	-	1	M18
11	Flat Washer	-	1	M18
*12	Top Cover, Motor	-	1	-
*13	Motor Shaft	-	1	-
14	Plate, Electronic Component Mounting	-	1	-
15	Electronic Board, 110V	X20512	1	
16	Screw, Round Head	-	2	M3x34mm
17	Auxiliary Contact Block	X25503	1	

*Included With SPC Model Motor Assembly X25063C (Page 9).

SP25/SPC25 MANUAL AND DIGITAL TIMER



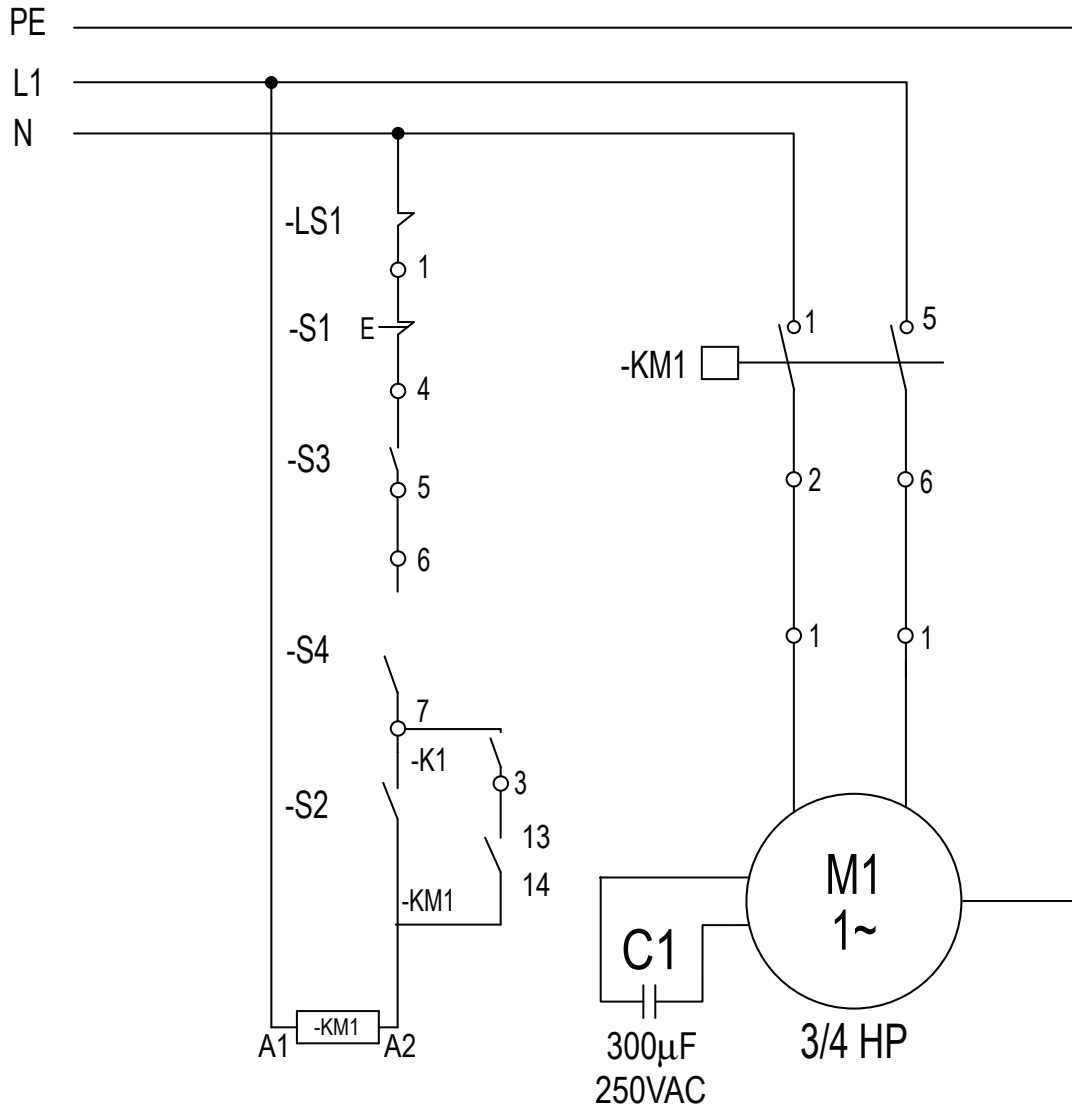
Manual Timer



Digital Timer

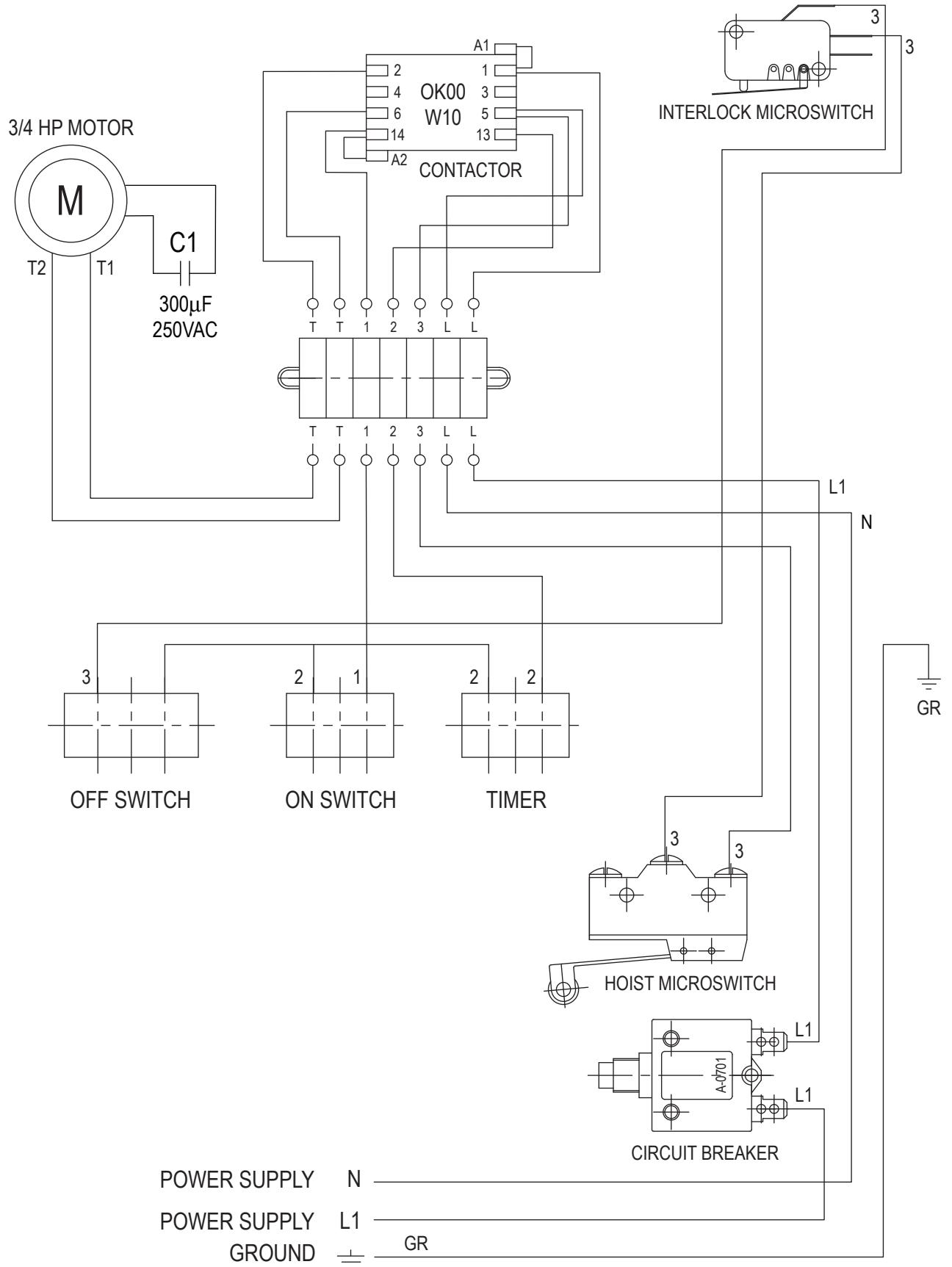
Item	Description	Part Number	Qty	Hardware
1	Control Panel	X10002	1	
1A	Screw, Truss Head	X10179	4	M4x10mm
2	Emergency Stop Button	X10050	1	
3	Start Button	X10049	1	
3A	Boot, Start/Stop Switch Button (Not Shown)	X10049-1	2	
4	Timer With Knob	X10137	1	
4A	Timer Knob	X10137-1	1	
4B	Timer Assembly With Control Panel	X25296	1	
5	Plate, Electronics Mounting	X25014	1	
6	Connecting Block Set	X10029A	1	
	Connecting Block, 2C Gry	X10029-2G	11	
	Connecting Block End Cap	X10029-EC	1	
7	Plate, Connecting Block Mounting	X25014A	1	
7A	Screw, Hex Head	X25013	2	M6x12mm
8	Contactor Prior To S/N 7212460	X20028	1	
	Contactor, Spc Model	X25503		
9	Tube, Support	X25191	2	
9A	Washer, Flat	-	2	M6
9B	Screw, Hex Head	X25189	2	M6x64mm
10	Tube, Support	X25080	2	
10A	Washer, Flat	-	2	M6
10B	Screw, Socket Head	X25081	2	M6x80mm
11	4 Wire Harness W/Connector	X00675	1	
12	Single Wire W/Quick Connect	X00676	2	
13	Switch, Membrane	X00565	1	
14	Control Panel Assembly	X00562	1	
15	Control Board	X00568	1	
16	Plate, Electronics Mounting	X25014	1	
17	Connecting Block Set	X25012	1	
	Connecting Block, 2C Gry	X10029-2G	11	
	Connecting Block End Cap	X10029-EC	1	
18	Plate, Connecting Block Mounting	X25014A	1	
18A	Screw, Hex Head	X25013	2	M6x12mm
19	Control Transformer Assembly	X00569	1	
20	Control Transformer Fuse (Not Shown)	X00570	1	
21	Contactor Prior To S/N 7212460	X20028	1	
	Contactor, Spc Model	X25503		
22	Tube, Support	X25191	2	
22A	Washer, Flat	-	2	M6
22B	Screw, Hex Head	X25189	2	M6x64mm
23	Tube, Support	X25080	2	
23A	Washer, Flat	-	2	M6
23B	Screw, Socket Head	X25081	2	M6x80mm

SP25 ELECTRICAL DIAGRAM - 120V SINGLE PHASE - PRIOR

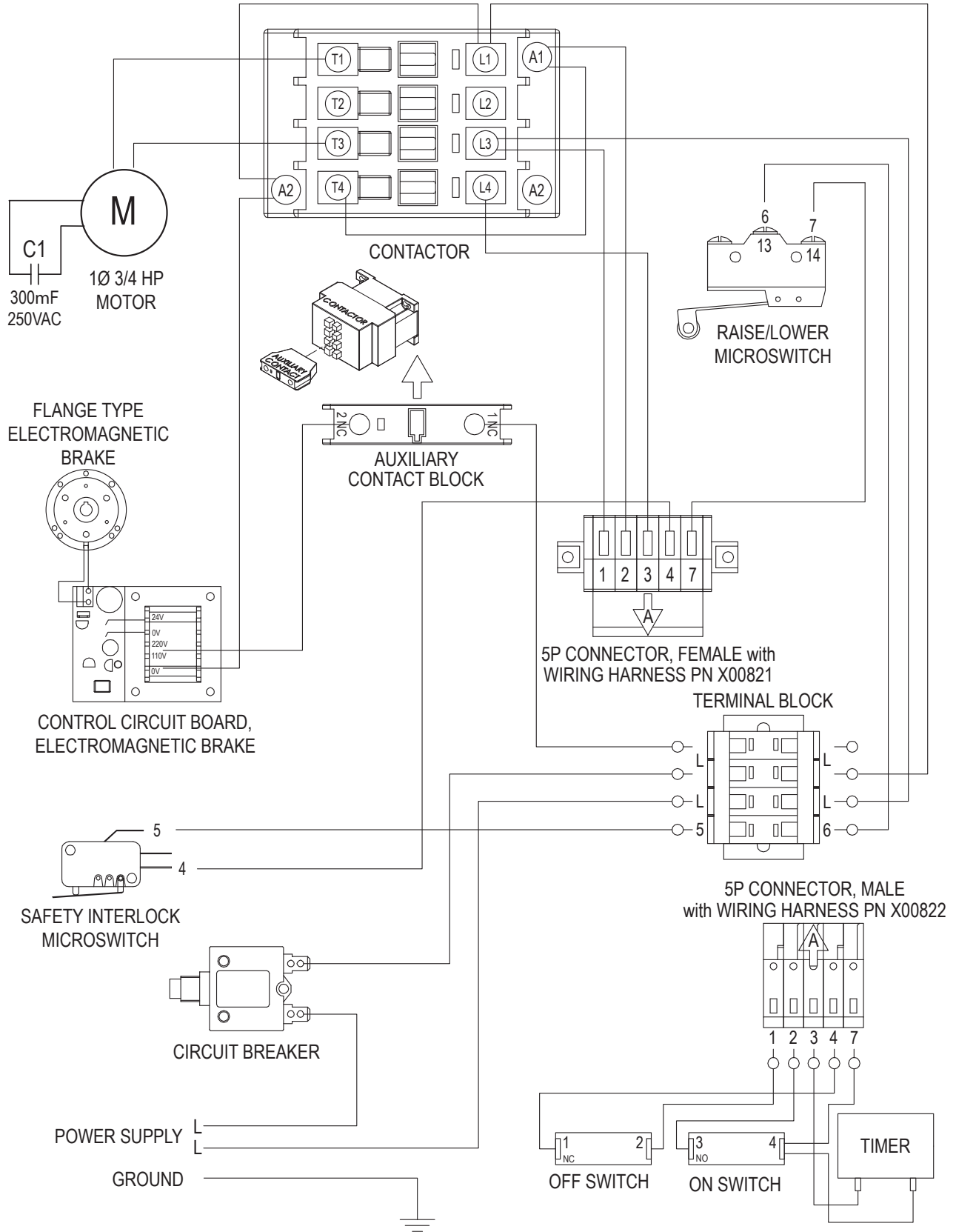


Item	Description	Qty
C1	Capacitor	1
S1	Emergency Stop Button	1
S2	Start Button	1
S3	Microswitch (Interlock Guard)	1
S4	Microswitch (Bowl Lift)	1
KM1	Contactor Coil 120V 60HZ	1
M1	Motor 3/4 Hr Single Phase 120V	1
LS1	Circuit Breaker	1
KI	Timer	1

SP25 WIRING DIAGRAM - 120V SINGLE PHASE - PRIOR



SPC25 WIRING DIAGRAM - 120V SINGLE PHASE - PRIOR



SP/SPC25 WIRING DIAGRAM - 120V SINGLE PHASE - DIGITAL TIMER - POST

