

***SERVICE MANUAL- M132 REVA***  
***MODEL 395 ELECTRIC KNIFE SHARPENER***

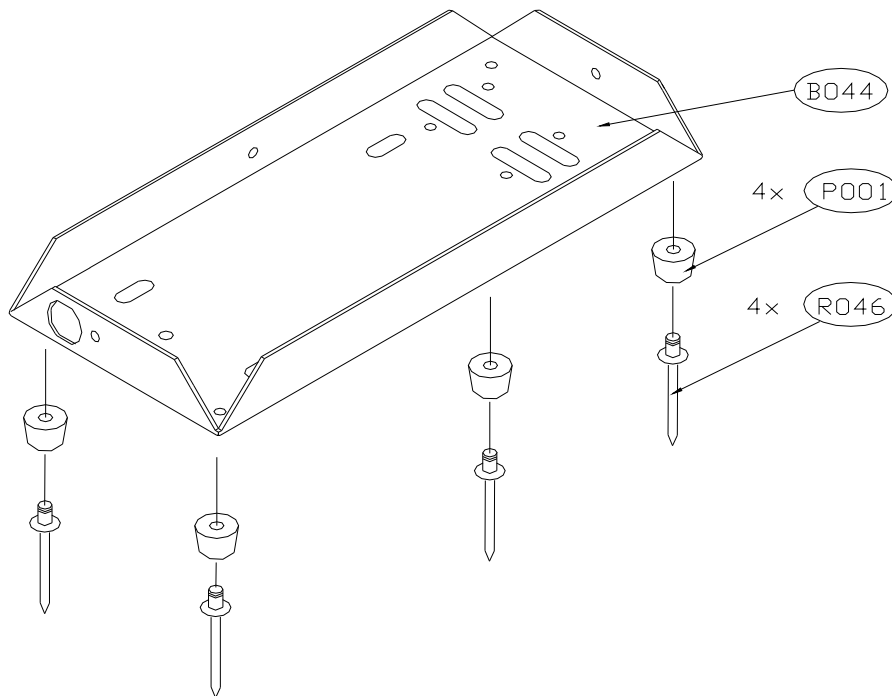
## Assembly Procedure

The Model 395 knife sharpener is assembled according to the following procedure.

### Assembly of Base Assembly (A527)

Install appropriate cord set and strain relief as shown on wiring diagram for 115 volt and 230 volt model into double "D" hole located in base assembly (A527). Cut green or green striped ground wire 2 - 3 inches long and crimp terminal (T007) into ground wire. Secure the terminal to base assembly-using screw (S071), external tooth washer on top of base but under terminal and a lock washer (W018) and nut (N019) under the base.

### **A527**



## **Assembly of Motor-to-Motor Plates**

Install snap bushing (B297) into one motor plate (P086). Place a washer (W009) on each rear motor stud and slide motor plate, with bent section toward motor, over the motor studs. Wires must exit motor on bottom toward bent section and through the bushing in the motor plate. Secure using external tooth washer (W017) and nut (N019) on left stud and wire clamp (C073), external tooth washer (W017) and nut (N019) on right stud. Feed wires through the wire clamp.

Place washer (W009) on each stud on shaft side of motor slide motor plate (P086) over studs with bent section towards rear of motor. Secure with external tooth washer (W017) and nuts (N019). Make sure both bent sections fit flat on base before tightening last two nuts.

Line up threaded holes in motor brackets with the four longitudinal slots in base and install serrated washer (W084) and hex screw (S063) into each threaded hole and secure finger tight.

Insert the power lead from the cord set (black/brown in color) through the wire clamp (C073) and install insulated terminal according to wiring diagram.

Take one motor lead that is through clamp and cut to same length as power lead and install insulated terminal according to appropriate wiring diagram

If motor is 115 volt, then cut other motor lead to length of 5 inches from snap bushing and secure to the neutral white wire along with a 6-inch long jumper wire with solder less connector (C092). Crimp together using proper crimping pliers.

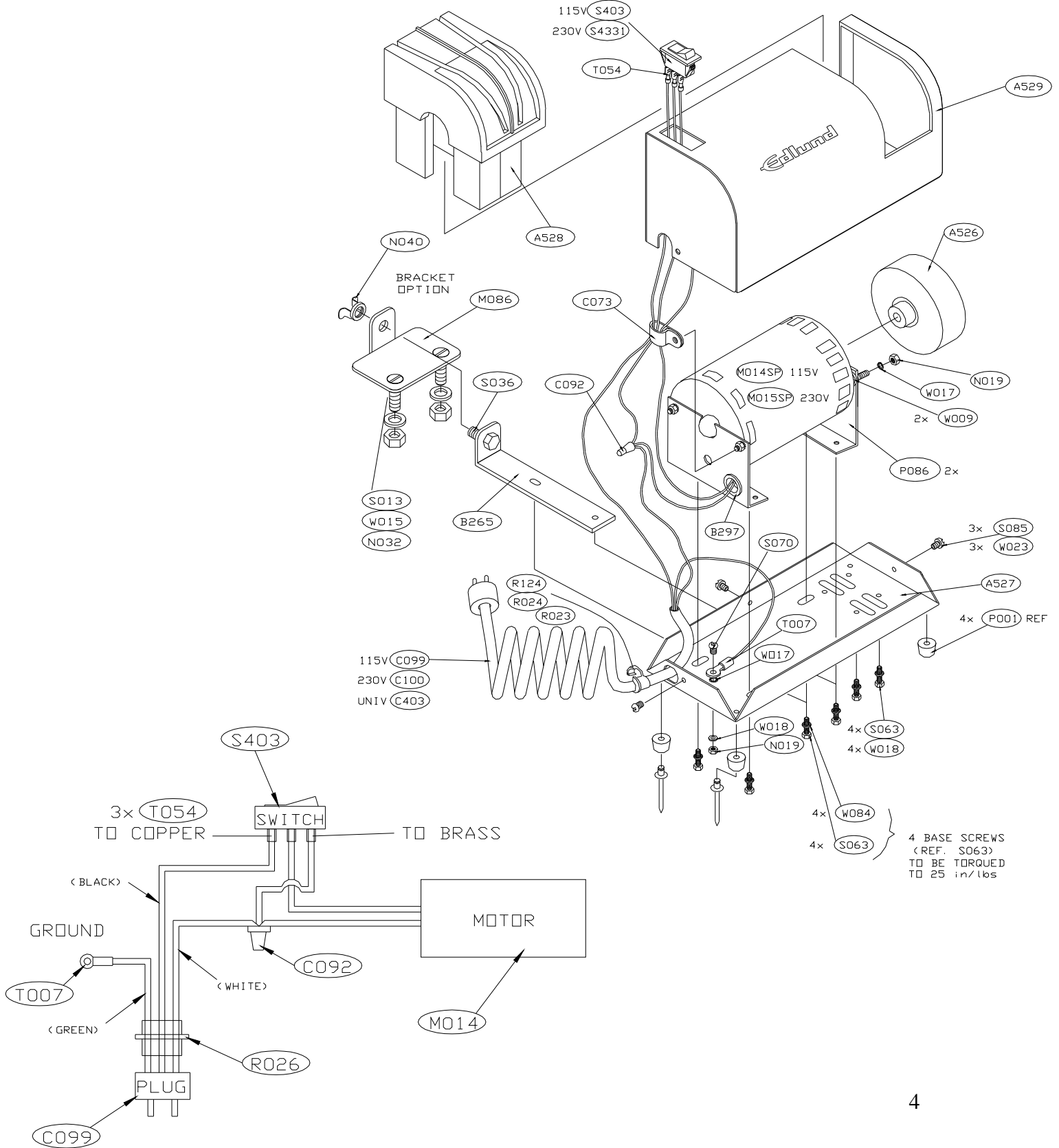
Insert the jumper wire through the wire clamp (C073) and cut to same length as other two leads. Install terminal shown on 115-volt wiring diagram (Fig. 3).

If motor is 230 volt, then thread other motor lead through the wire clamp (C073) and install terminal shown on wiring diagram along with shrink tube shown. Insert neutral wire (white/blue in color) through the wire clamp, cut to same length as other three leads and install terminal and shrink tube according to wiring diagram

### **PARTS LIST**

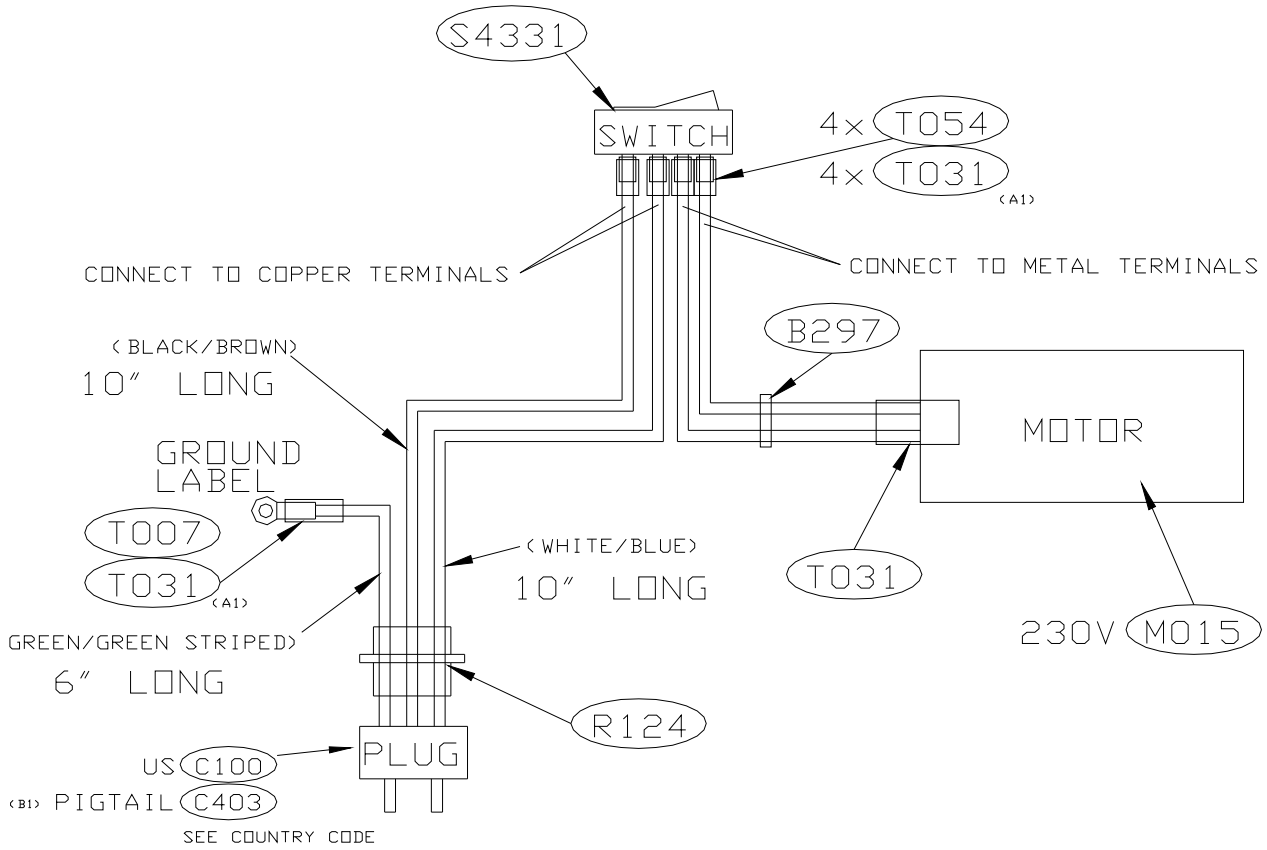
<b>PART #</b>	<b>U/M</b>	<b>DESCRIPTION</b>
A526	EA.	ASSEMBLY, #395 GRINDING WHEEL
A527	EA.	ASSEMBLY, #395 BASE
A528	EA.	ASSEMBLY, #395 PLASTIC KNIFE GUIDE
A529	EA.	WELDMENT, #395 COVER
B265	EA.	BRACKET, BASE LOCK
B297	EA.	BUSHING, 1/2" SNAP, 3/8" ID HEYCO #SB 500-6
C073	EA.	CLAMP, #201 CABLE HEYCO #3324
C092	EA.	CONNECTOR, #390/395/CH-5000 LEAD
C099	EA.	CORD SET, REGULAR 7', 18/3, GRAY
M014SP	EA.	MOTOR, #395 115V SPARE PART
M015SP	EA.	MOTOR, #395 230V SPARE PART
M086	EA.	MOUNT, TABLE LOCK
N019	EA.	NUT, 10-32 PLATED HEX
N032	EA.	NUT, 1/4-20 NYLOCK
N040	EA.	NUT, 4-20 WING S/S
P001	EA.	PAD, ECO FOOT
P086	EA.	PLATE, #395 MOTOR
R023	EA.	RELIEF, ELECTRIC STRAIN
R046	EA.	RIVET, SB 5-6
S022	EA.	SCREW, 1/4-20 X 3 FL 40 S/S
S036	EA.	SCREW, 1/4-20 X 1/2 S/S HEX HEAD
S063	EA.	SCREW, 10-32 X 3/8 PLTD HH CAP SCREW
S070	EA.	SCREW, 10-32 X 5/16 PLATED RHM
S085	EA.	SCREW, 8-32 X 1/4 S/S RHM
S403	EA.	SWITCH, CH-5000/350 USA LIGHTED ROCKER
T007	EA.	TERMINAL, ECO ROUND TONGUE
W009	EA.	WASHER, #10 PLATED FLAT
W015	EA.	WASHER, 1/4" S/S FLAT
W017	EA.	WASHER, #10 EXT. TOOTH LOCK, PTD
W018	EA.	WASHER, #10 3/16 PLATED LOCK
W023	EA.	WASHER, 3/8 S/S LOCK
W084	EA.	WASHER, #10 SERRATED PLATED

## 115V ASSEMBLY/ WIRE DIAGRAM



Edlund Company, Inc., 159 Industrial Parkway, Burlington, VT 05401 802-862-9661

## 230-VOLT WIRE DIAGRAM



**Assembly of Grinding Wheel to Motor: SEE ASSEMBLIES**

Install grinding wheel (A526) onto motor shaft 0.105 inches from front of motor. Secure by tightening set screw (S089) onto flat on motor using 3/32 inch Allen wrench. Torque to 32 inch pounds (3.62 N.M).

Check run out and wobble of wheel on arbor. Correct by releasing ¼-20 flat head screw (S015) on end of arbor shaft and indexing grinding wheel on arbor until wobble and run out are minimized. Tighten flat head screw (S015) to torque of 100 in/lb. (11.3 N.M).

Install appropriate rocker switch as shown on wiring diagram into the rectangular holes on the top of cover with the on position ("1") towards rear of cover or toward flat back. Slide the insulated terminals over terminals of switch according to wiring diagram (Fig. 3, Fig. 4).

Slide the cover over the base and motor assembly, align the three holes with the three holes in the base and secure with screws (S085) and lock washers (W023). (Do not tighten screws at this time.)

Carefully slide the knife guide assembly (A528) into the large hole in cover and secure to base using screws (S063) and lock washers (W018). Check to be sure grinding wheel is equally spaced between the center portions of the knife guide assembly. Wheel must rotate freely.

Correct position of grinding wheel relative to knife guide assembly by loosening the four screws that secure the motor plates to the base and slide the motor back and forth until wheel and guide are properly aligned. Tighten screws to torque of 25-30 in/lb. (2.82-3.39 N.M). Check to be sure grinding wheel rotates freely. Tighten three screws (S085) that secure cover.

Plug cord set into outlet with same voltages as listed on the rating label and turn rocker switch to on position. Motor should come on, switch light should be on and grinding wheel must rotate freely without wobble.

Check grinding wheel by running knife over each side of wheel. If wheel wobbles or jumps too much, replace with different grinding wheel assembly.

Test knife sharpener according to final inspection instructions: EC1064A.

**Model 395 Knife Sharpener****Trouble Shooting Guide**

<b>Problem</b>	<b>Cause</b>	<b>Correction</b>
I. Knife sharpener will not start.	1. Cordset not plugged into outlet.	1. Plug cordset into outlet with same voltage as listed on rating label.
	2. Actuating switch inoperative.	2. Replace switch.
	3. Broken wire in cordset.	3. Unplug cordset. Check continuity of each wire and replace as required.
	4. Broken wires or loose terminal.	4. Check for loose wires, check continuity of internal wires and replace or repair as required.
	5. Motor failure.	5. Replace motor.
II. Motor hums when switch is actuated.	1. Grinding wheel is contacting knife guide.	1. Check to see if wheel is contacting knife guide. Realign wheel using procedure listed in assembly procedure.
	2. Motor fan has become loose and is contacting motor stator.	2. Replace motor.
	3. Grinding wheel loose on motor shaft.	3. Remove knife guide. Check for loose wheel on arbor or loose arbor on motor shaft. Tighten to appropriate torque. Reassemble and align grinding wheel.
III. Knife not contacting grinding wheel when placed against knife guide surface and brought all the way to bottom of slot.	1. Worn grinding wheel.	1. Replace grinding wheel using grinding wheel replacement procedure.
IV. Grinding wheel wobbles badly when sharpener is turned on.	1. Motor drive shaft may be bent.	1. Replace motor.