

MODULAR BASE WITH KETTLE(S)

24 KW ELECTRIC STEAM GENERATOR
 ONE or TWO 6 GALLON KETTLE(S)
 CABINET BASE: 24" (600MM) or 36" (900MM) WIDE

- MODELS:** 24-EM-K6-24
 36-EM-K36-24
 36-EM-K66-24

Cleveland Standard Features

- Factory assembled Kettle/Steam Generator Base combination with one or two, 6 gallon kettles with 24 KW Electric Steam Generator
- Solid State steam generator Water Level Controls
- Low Water Safety Cut-off
- Pressure Limit Controls with 15 psi Safety Valve
- Type 430 Stainless Steel exterior enclosure, and table top (with Drain Trough which has 1.50" diameter male drain), #4 exterior finish
- Type 304 Stainless kettle(s), #4 exterior finish
- Separate Start/Rest Illuminated Switch Controls, plus Pressure Gauge
- Major components serviceable from the front of the unit
- 6 gallon kettle(s) are 2/3 Steam Jacket rating, and include Lift-off Covers
- Hot and Cold Water Faucet with Swing Spout
- Kettle(s) have 50 psi chrome plated Safety Valve(s) and Manual Tilting balanced design
- Tilt Handles can be mounted on either side
- Steam Generator empties under pressure (blowdown) automatically upon each Shut-Down. Automatic Water Refill on Start-Up
- "Clear access" Lift-Off Front Panel
- Secondary Low Water Cut-Off, factory installed (CALE) (Required for AZ. AR. CA. CO. CT. DE. FL. GA. HI. IL. IA. KS. MD. MA. MI. MN. MT. NE. NV. NM. NC. OK. OR. PR. RI. TN. UT. VA. WA. WV., Buffalo, NY, Wash. DC)
- Standard voltage is 208volt, 60 Hz, 3 Phase, 3 Wire
- Adjustable Flanged Feet (FF-A)

Options & Accessories

- Power Take-Off Kit (EPTO)
- Voltages other than standard
- Type 316 Stainless Steel kettle interior for high acid food products (316)
- Food Strainers (FS)
- Stainless Steel Base Frame (FSS)
- Boiler Descaling Pump Kit (107142)



Short Form Specifications

Shall be CLEVELAND, Modular Cabinet Base with one or two, 6 gallon kettle(s), Model ____-EM-K ____-24, with 24KW Electric Steam Generator; type 430 Stainless Steel exterior enclosure, table top and 4 level adjustable feet. 2/3 Steam Jacketed, type 304 Stainless Steel kettle(s) with 50 psi Steam Jacket Rating; needle type Steam Control Valve on each kettle. Console mounted Controls, Pressure Gauge and Illuminated "Start/Reset" Control Switches. Solid State Water Level Steam Generator Controls. Steam Generator drains under pressure (blowdown) after each Shut-Down with Automatic Water Refill on Start-Up. 15 psi Safety Valve.

CAPACITIES

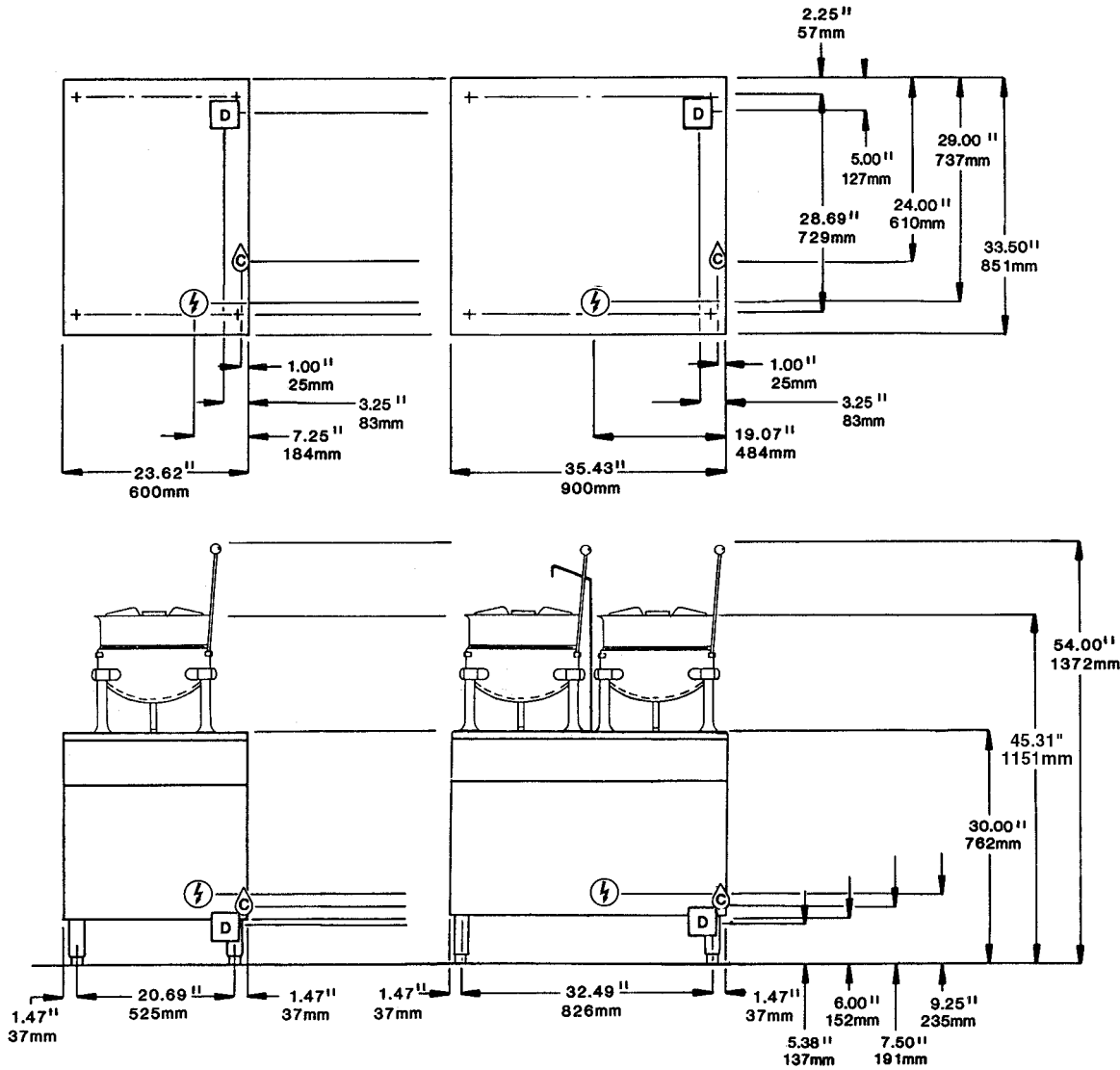
(in 4 oz. servings)
 (Other sizes may be calculated.)
 6 gallon / 23 liters 160 per kettle

WATER QUALITY REQUIREMENT

The recommended minimum water quality standards whether untreated or pre-treated, based upon 10 hours of use per day, and a Daily Blowdown, are as follows:

TOTAL DISSOLVED SOLIDS	less than 60 parts per million
TOTAL ALKALINITY	less than 20 parts per million
SILICA	less than 13 parts per million
pH FACTOR	greater than 7.5
CHLORINE	less than 30 parts per million

Consult a local water treatment specialist for an on site water analysis for recommendations concerning steam generator feed water treatment (if required), in order to remove or reduce harmful concentrations of minerals. The use of highly mineralized water will mean that more frequent servicing of the steam generator will be necessary. The fact that a water supply is potable is not proof that it will be suitable for the generator.



ELECTRIC ⚡		WATER H C	DRAINAGE D	CLEARANCE																														
<table border="1"> <tr> <td colspan="2">3 PHASE</td> <td></td> <td></td> <td></td> </tr> <tr> <td></td> <td>KW</td> <td>24</td> <td>36</td> <td>48</td> </tr> <tr> <td>208V</td> <td>AMPS</td> <td>57</td> <td>100</td> <td>119</td> </tr> <tr> <td>220V</td> <td>PER LINE</td> <td>63</td> <td>80</td> <td>127</td> </tr> <tr> <td>240V</td> <td></td> <td>52</td> <td>87</td> <td>116</td> </tr> <tr> <td>480V</td> <td></td> <td>26</td> <td>44</td> <td>58</td> </tr> </table>		3 PHASE						KW	24	36	48	208V	AMPS	57	100	119	220V	PER LINE	63	80	127	240V		52	87	116	480V		26	44	58	35 psi minimum 60 psi maximum H C 1/4" NPT hot and cold water for kettles C 1/4" NPT cold water	1 1/2" IPS common drain. Do not connect other units to this drain. The Floor Drain must be located outside the confines of the equipment. Do not use PVC pipe for drain.	Right - 3", Left - 3", Rear - 3" (12" on control side if adjoining wall or equipment is over 30" high for service access) Contact factory for variances to clearances.
3 PHASE																																		
	KW	24	36	48																														
208V	AMPS	57	100	119																														
220V	PER LINE	63	80	127																														
240V		52	87	116																														
480V		26	44	58																														
For power supply, use copper wire only.																																		

NOTES:

Cleveland Range reserves right of design improvement or modification, as warranted.
 Many regional, state and local codes exist and it is the responsibility of the owner and installer to comply with the codes.
 Cleveland Range equipment is built to comply with applicable standards for manufacturers. Included among those approval agencies are U.L., NSF, CGA, CSA, ETL and others.