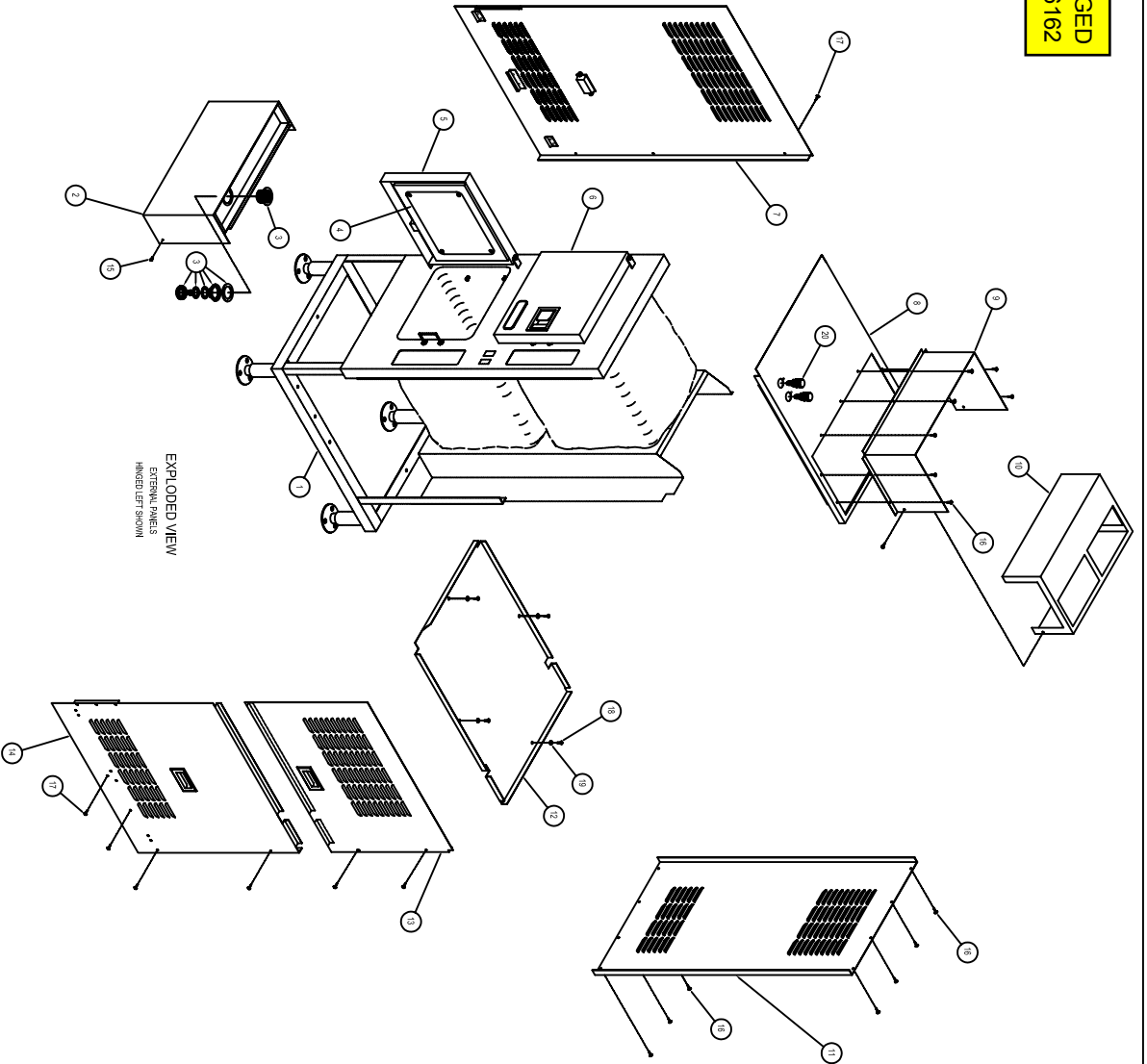


**6" FLANGED
FOOT 06162**

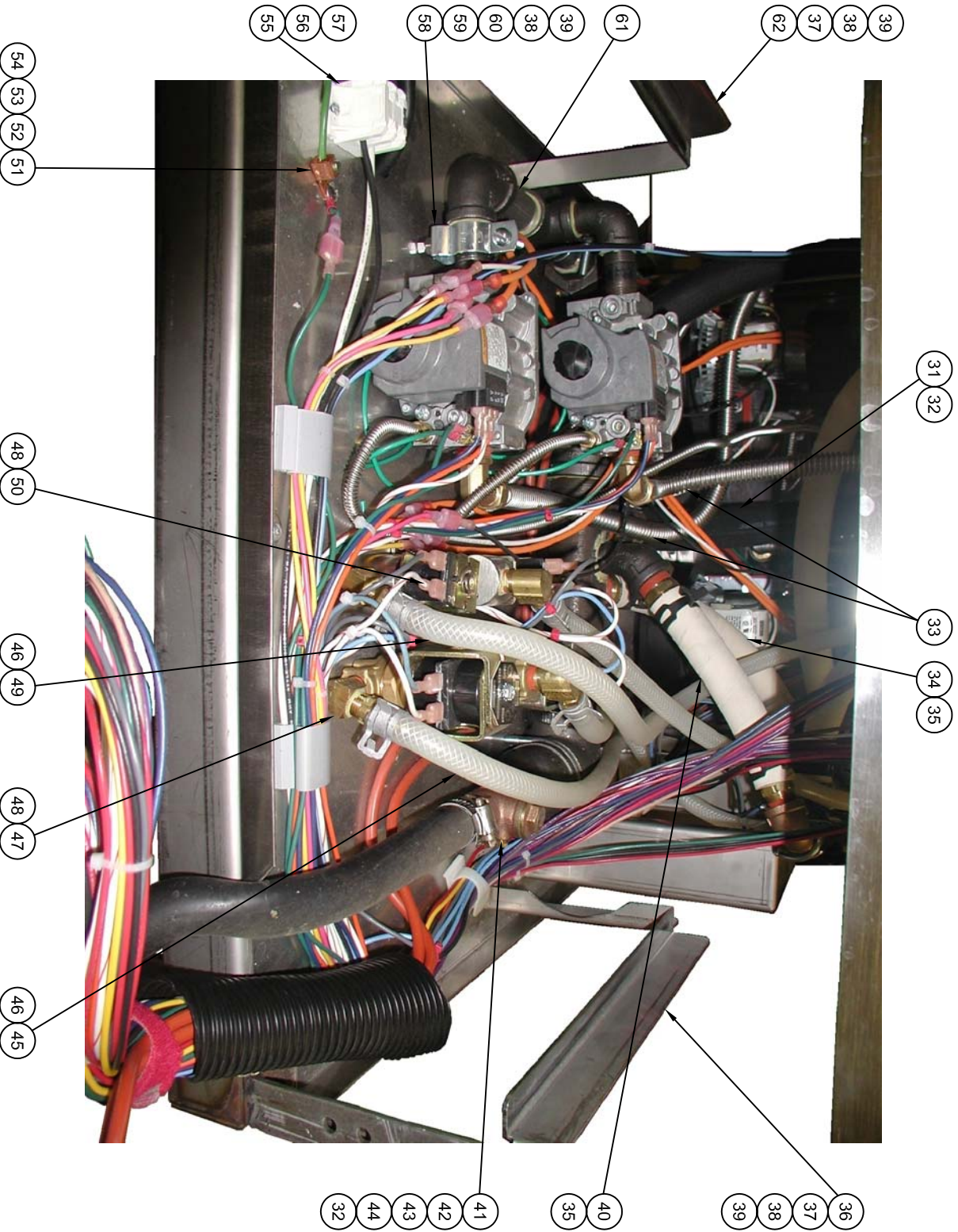


REV	DESCRIPTION	DATE	BY
A	PRODUCTION RELEASE PER ECN 0628894	03-24-04	DS
B	REV# 028 WAS 11/20/04 PER 101 WAS 7/01/05	07-26-04	DS
C	REV# 028 WAS 03/07 PER ECN 062914	03-24-04	DS
D	REV# 028 WAS 03/07 PER ECN 062914	03-24-04	DS
E	REV# 028 WAS 03/07 PER ECN 062914	03-24-04	DS
F	REV# 028 WAS 03/07 PER ECN 062914	03-24-04	DS

REV	DESCRIPTION	DATE	BY
20	1 10864	RIGHT REAR LEG ASSY	
19	4 10865	RIGHT REAR LEG ASSY	
18	4 10866	RIGHT REAR LEG ASSY	
17	10 10867	RIGHT REAR LEG ASSY	
16	17 10868	RIGHT REAR LEG ASSY	
15	2 10869	RIGHT REAR LEG ASSY	
14	1 10870	RIGHT REAR LEG ASSY	
13	1 10871	RIGHT REAR LEG ASSY	
12	1 10872	RIGHT REAR LEG ASSY	
11	1 10873	RIGHT REAR LEG ASSY	
10	1 11128	COVER EXTER	
9	1 10881	HOOD GAS HOSE	
8	1 10882	PANEL TOP VENTURER	
7	1 10883	PANEL LEFT SIDE ASSY	
6	1 10884	DOOR OUTER ASSY (R. WITH LOCK)	
5	1 10885	DOOR OUTER ASSY (L)	
4	2 10886	DOOR OUTER ASSY (R)	
3	2 10887	DOOR OUTER ASSY (L)	
2	1 10888	PANEL ASSY LOWER FRONT	
1	1 10889	DOOR ASSY LOWER FRONT	

REV	D	DATE	11/07/04	BY	DS
TITLE	GEMINI 6 SHORT COMPONENT LOCATION INSTRUCTIONAL DWG				
PROJECT	1107791_1.dwg				
SHEET #	1 OF 1				

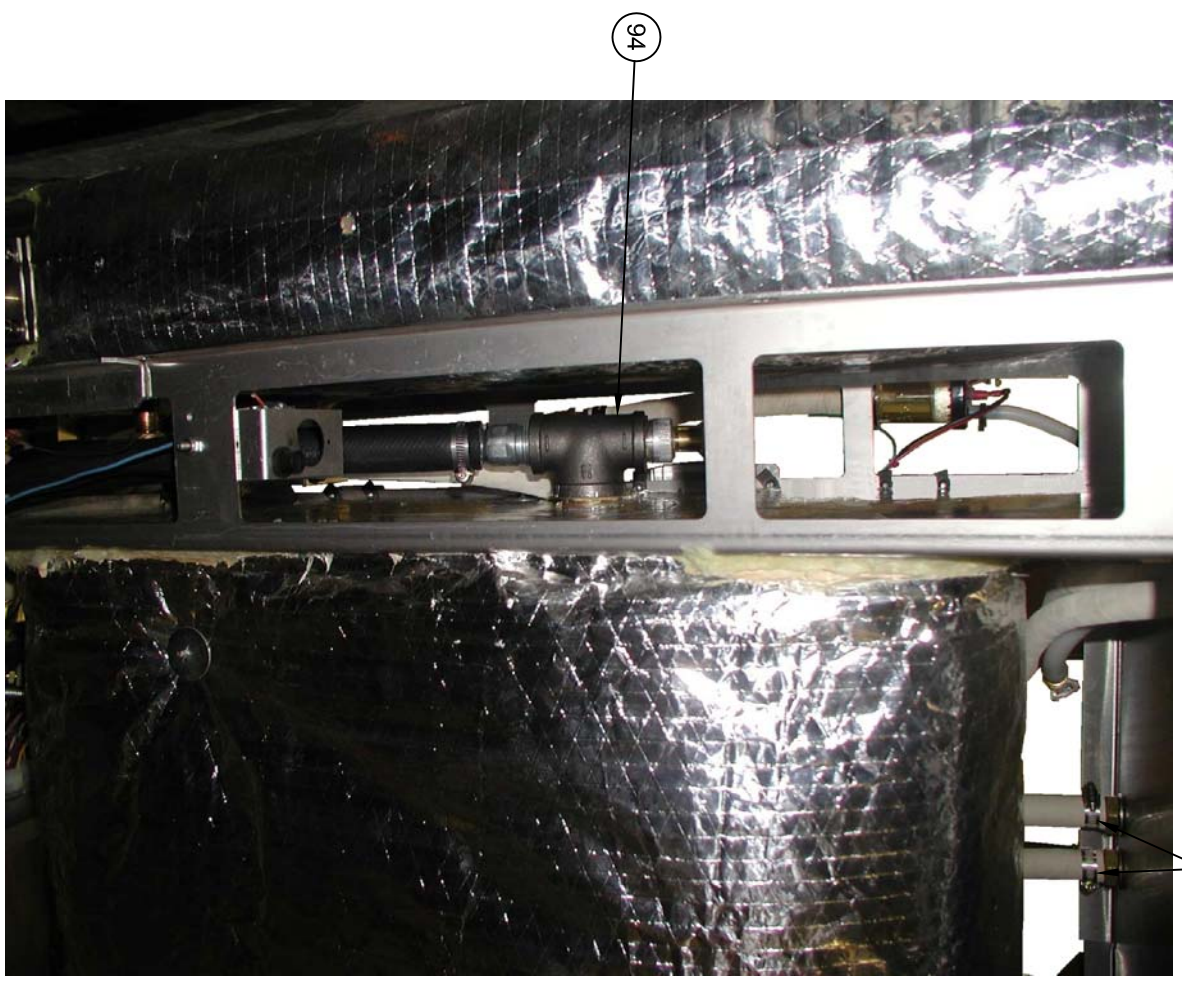
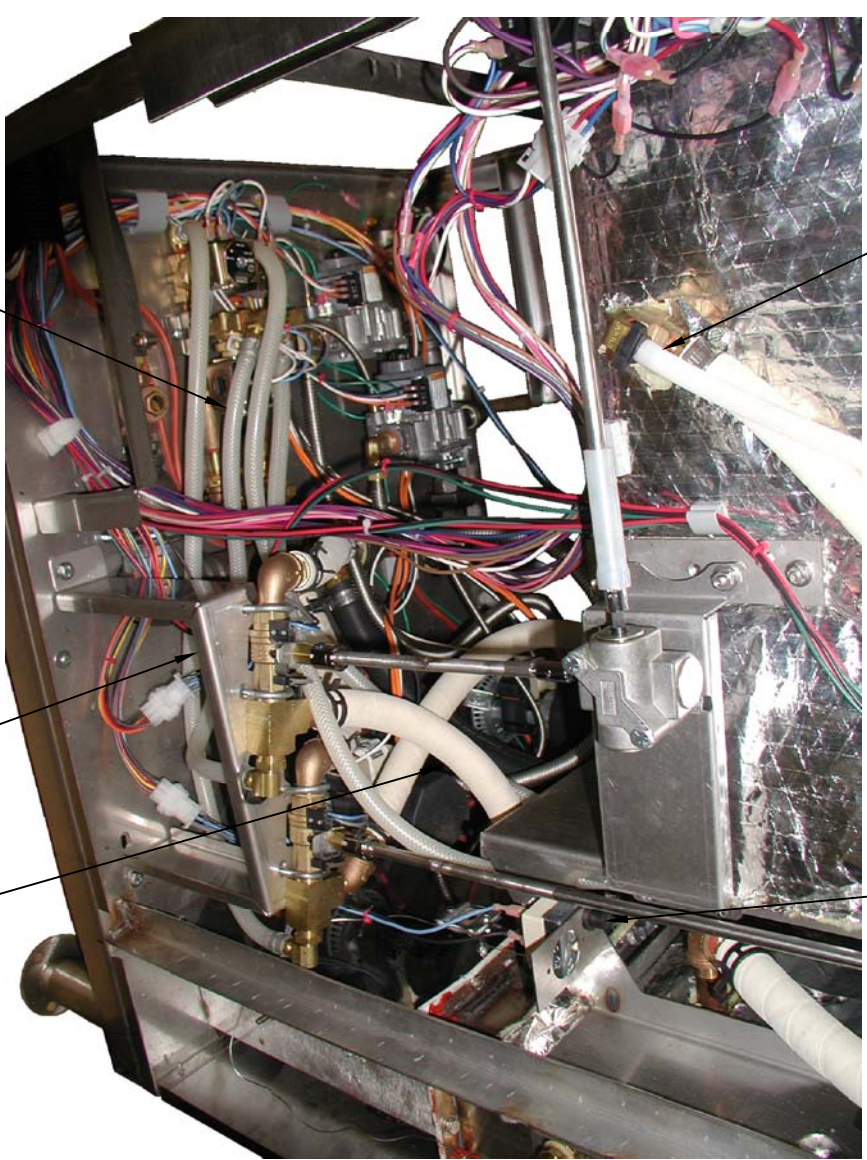
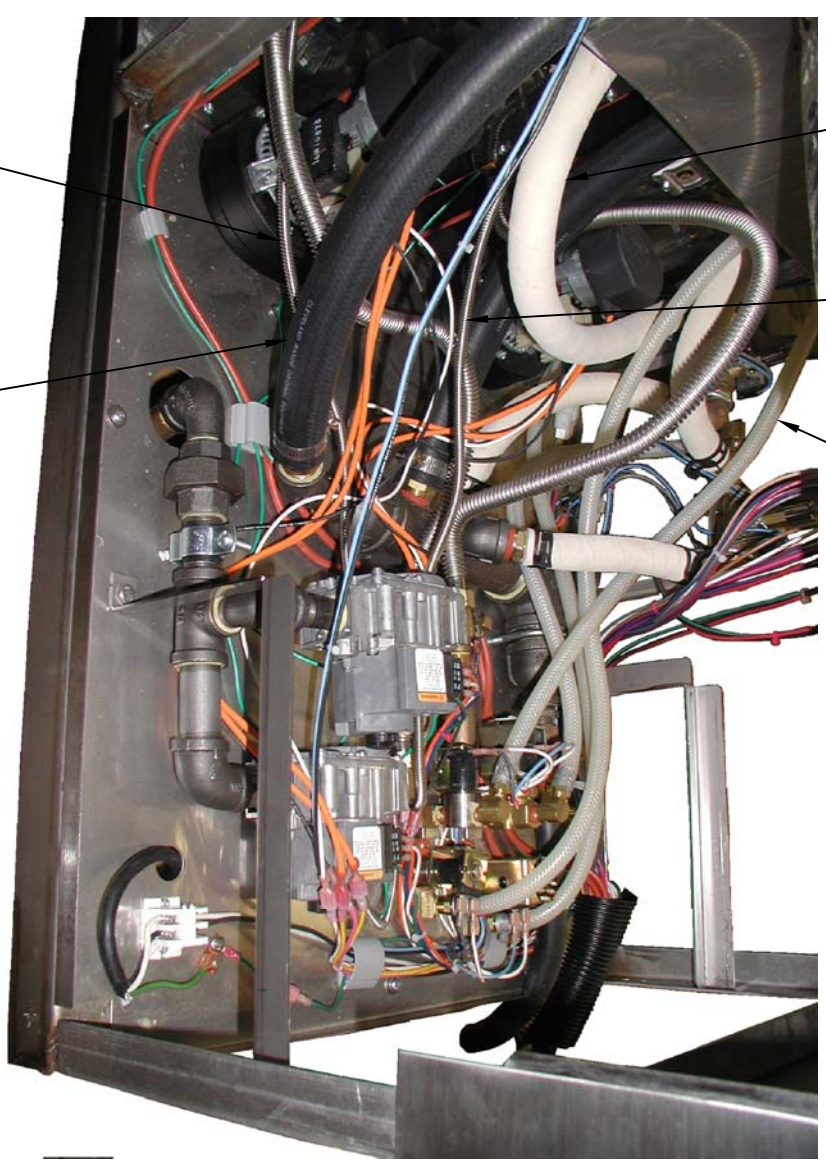
CLEVELAND RANGE, LLC
 25000 WALKER ROAD, CLEVELAND, OHIO 44115
 216.291.1000
 FAX 216.291.1001
 WWW.CLEVELANDRANGE.COM
 01-06-04



△

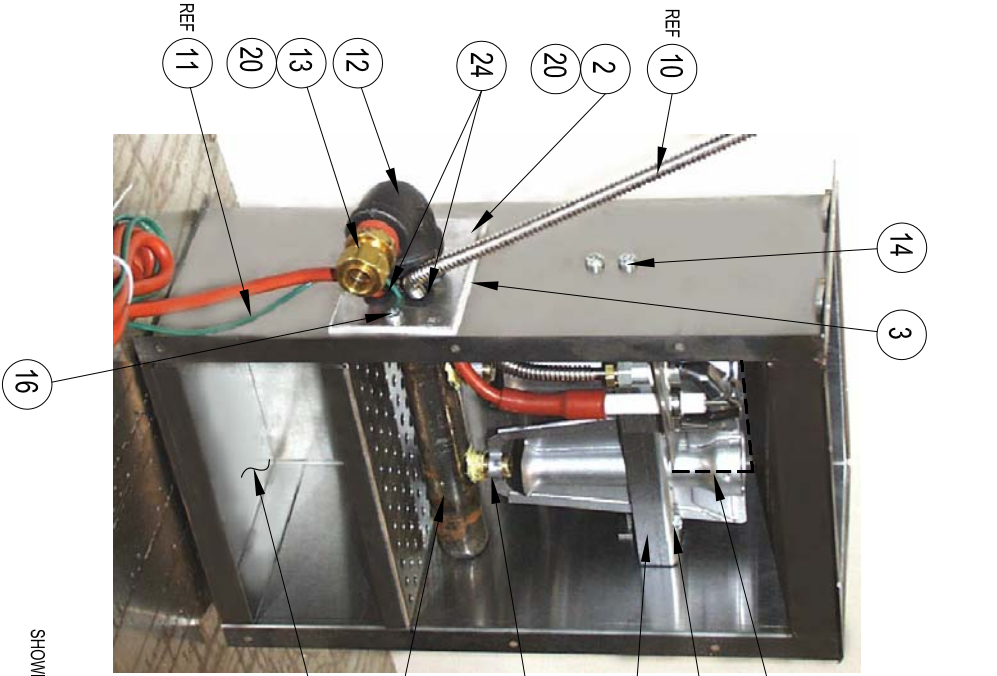
QTY	DESCRIPTION	QTY	DESCRIPTION
32	1 108281 RAL LEFT BRWNER	32	1 108281 RAL LEFT BRWNER
31	1 108281 GAS/WAVE ASSY LP	31	1 108281 GAS/WAVE ASSY LP
61	4 14818 WLT 1/4-20 X 1/2	61	4 14818 WLT 1/4-20 X 1/2
60	2 107277 S/S 9/16 X 1/4 X 1/8	60	2 107277 S/S 9/16 X 1/4 X 1/8
59	2 1085038 CLAMP PPE 3/4	59	2 1085038 CLAMP PPE 3/4
58	2 108177 S/S 9/16 X 1/4 X 1/8 TORX	58	2 108177 S/S 9/16 X 1/4 X 1/8 TORX
39	2 20281 TERNUM BLOKS, REPAIRS SECTION	39	2 20281 TERNUM BLOKS, REPAIRS SECTION
38	1 20282 TERNUM BLOKS, END SECTION	38	1 20282 TERNUM BLOKS, END SECTION
37	1 108281 WLT 1/4-20 X 1/2	37	1 108281 WLT 1/4-20 X 1/2
36	1 108281 WLT 1/4-20 X 1/2	36	1 108281 WLT 1/4-20 X 1/2
41	1 108281 WLT 1/4-20 X 1/2	41	1 108281 WLT 1/4-20 X 1/2
42	1 108281 WLT 1/4-20 X 1/2	42	1 108281 WLT 1/4-20 X 1/2
43	1 108281 WLT 1/4-20 X 1/2	43	1 108281 WLT 1/4-20 X 1/2
44	1 108281 WLT 1/4-20 X 1/2	44	1 108281 WLT 1/4-20 X 1/2
40	1 108281 WLT 1/4-20 X 1/2	40	1 108281 WLT 1/4-20 X 1/2
35	1 108281 WLT 1/4-20 X 1/2	35	1 108281 WLT 1/4-20 X 1/2
34	1 108281 WLT 1/4-20 X 1/2	34	1 108281 WLT 1/4-20 X 1/2
33	1 108281 WLT 1/4-20 X 1/2	33	1 108281 WLT 1/4-20 X 1/2
32	1 108281 WLT 1/4-20 X 1/2	32	1 108281 WLT 1/4-20 X 1/2
45	1 108281 WLT 1/4-20 X 1/2	45	1 108281 WLT 1/4-20 X 1/2
46	1 108281 WLT 1/4-20 X 1/2	46	1 108281 WLT 1/4-20 X 1/2
47	1 108281 WLT 1/4-20 X 1/2	47	1 108281 WLT 1/4-20 X 1/2
48	1 108281 WLT 1/4-20 X 1/2	48	1 108281 WLT 1/4-20 X 1/2
49	1 108281 WLT 1/4-20 X 1/2	49	1 108281 WLT 1/4-20 X 1/2
50	1 108281 WLT 1/4-20 X 1/2	50	1 108281 WLT 1/4-20 X 1/2
51	1 108281 WLT 1/4-20 X 1/2	51	1 108281 WLT 1/4-20 X 1/2
52	1 108281 WLT 1/4-20 X 1/2	52	1 108281 WLT 1/4-20 X 1/2
53	1 108281 WLT 1/4-20 X 1/2	53	1 108281 WLT 1/4-20 X 1/2
54	1 108281 WLT 1/4-20 X 1/2	54	1 108281 WLT 1/4-20 X 1/2
55	1 108281 WLT 1/4-20 X 1/2	55	1 108281 WLT 1/4-20 X 1/2
56	1 108281 WLT 1/4-20 X 1/2	56	1 108281 WLT 1/4-20 X 1/2
57	1 108281 WLT 1/4-20 X 1/2	57	1 108281 WLT 1/4-20 X 1/2
58	1 108281 WLT 1/4-20 X 1/2	58	1 108281 WLT 1/4-20 X 1/2
59	1 108281 WLT 1/4-20 X 1/2	59	1 108281 WLT 1/4-20 X 1/2
60	1 108281 WLT 1/4-20 X 1/2	60	1 108281 WLT 1/4-20 X 1/2
61	1 108281 WLT 1/4-20 X 1/2	61	1 108281 WLT 1/4-20 X 1/2
62	1 108281 WLT 1/4-20 X 1/2	62	1 108281 WLT 1/4-20 X 1/2

CLEVELAND RANGE, LLC	
28555 STATE ROUTE 101, CLEVELAND, OH 44116-1200	
DATE	01-06-24
DESIGNED BY	DS
CHECKED BY	
TITLE	GEMINI 65 HP SHORT COMPONENT LOCATION
INSTRUCTIONAL DWG	
REV.	11/07/19 2.dwg
SHEET 4 OF 4	

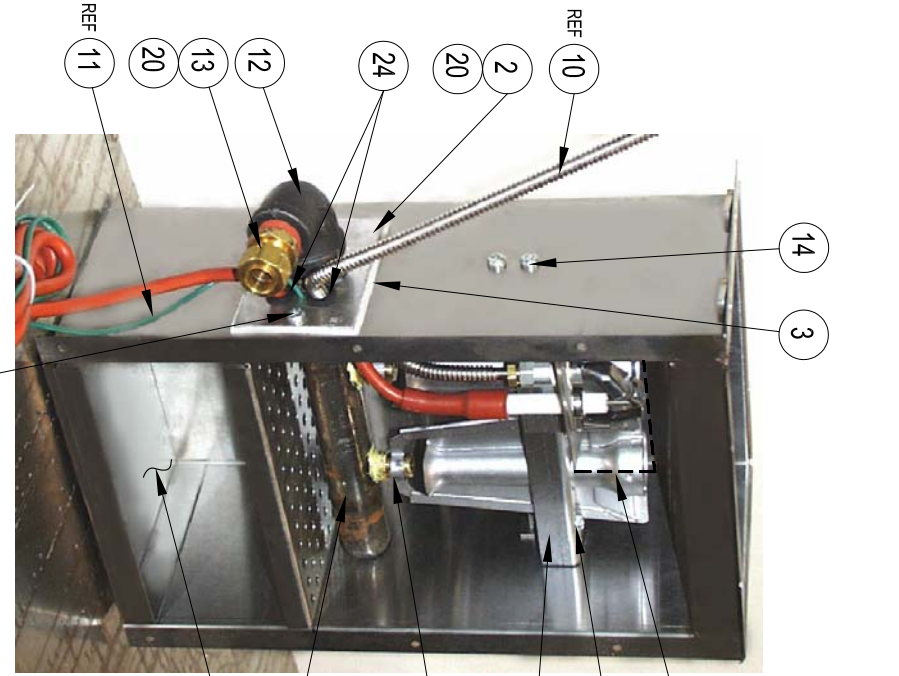


ITEM	QTY	PART NO.	DESCRIPTION
95	2	03207	CLAMP HOSE LINED WORM DRIVE
94	2	1061712	DRAIN ASSY COMPARTMENT
93	1	106892100	HOSE 0.290" ID X 21.000" REINFORCED
92	2	14665	NUT 1/4-20 HEX LOCK
91	4	23116	WASHER FLAT 0.281 ID X 0.625 OD
90	2	19288	SCREW 1/4-20 X 0.750 HEX HD
89	1	110680	DRAIN / FILL ASSEMBLY
88	4	101813	NUT 1/4-20 THIN HEX LOCK
87	4	19170	SCREW 1/4-20 X 0.625 HEX HD
86	2	108306	BRACKET MOUNTING HIGH LIMIT
85	2	108965	HIGH LIMIT ASSY
84	2	070991	BREATHER ASSY
83	2	02204	CLAMP HOSE WORM DRIVE
82	1	1064693390	HOSE 1.000" ID X 33.500" BLACK EPDM
81	1	106111100	HOSE 0.790" ID X 11.000" WHITE EPDM
80	2	1073121	CLAMP HOSE TENSION BAND
79	1	1068910900	HOSE 0.290" ID X 36.000" REINFORCED
78	2	108929	GAS LINE PILOT
77	4	107312	CLAMP HOSE TENSION BAND
76	1	106112100	HOSE 0.790" ID X 21.000" WHITE EPDM

CLEVELAND RANGE, LLC 1333 East 179th St., Cleveland, OH 44110-2574			
THE DIMENSIONS AND WEIGHTS INDICATED IN THIS DRAWING ARE THE PROPERTY OF CLEVELAND RANGE. THE DIMENSIONS MUST BE CONTROLLED AND KEPT WITHIN THE APPROVAL OF CLEVELAND RANGE.			
TOLERANCES UNLESS OTHERWISE SPECIFIED	DO NOT SCALE	DRAWN BY	DATE
DECIMAL	AS SHOWN	DS	01-10-2024
GEMINI 6 SHORT COMPONENT LOCATION INSTRUCTIONAL DWG			
SIZE	DRAWING NO.	SHEET 3 OF 4	REV
D	1107731_3.dwg	F	

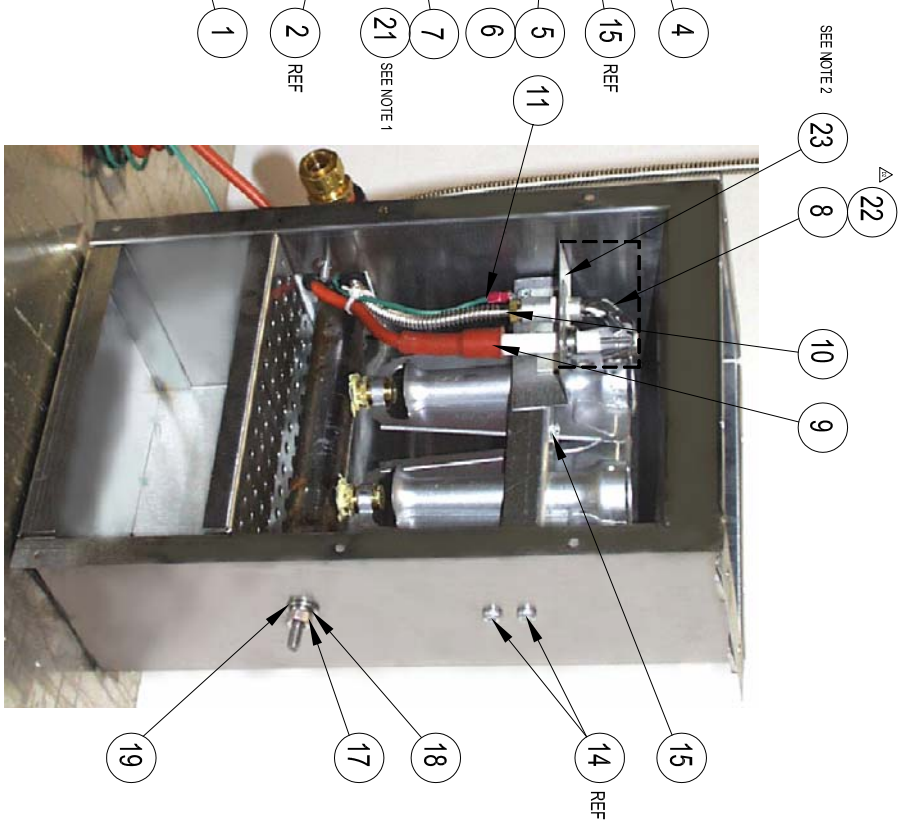


BURNER BOX ASS'Y
SHOWING MANIFOLD ASS'Y & BURNER ALIGNMENT



ORIFICE CHART NATURAL GAS (REF)			
ALTITUDE	P/N:	QTY	DESCRIPTION
0 - 1999'	110939	2	ORIFICE: #39 DMS. VER GEN
2000 - 2999'	110940	2	ORIFICE: #40 DMS. VER GEN
3000 - 4999'	110941	2	ORIFICE: #41 DMS. VER GEN
5000 - 6999'	110942	2	ORIFICE: #42 DMS. VER GEN
7000 - 8999'	110943	2	ORIFICE: #43 DMS. VER GEN
9000 - 11000'	110944	2	ORIFICE: #44 DMS. VER GEN

ORIFICE CHART LP GAS (REF)			
ALTITUDE	P/N:	QTY	DESCRIPTION
0-1999'	110953	2	ORIFICE: #53 DMS. VER GEN
2000 - 7999'	110954	2	ORIFICE: #54 DMS. VER GEN
8000 - 11000'	110955	2	ORIFICE: #55 DMS. VER GEN



QTY	REF	QTY	REF	ITEM	PART NO.	DESCRIPTION
1	1	26			30026	TERMINAL SLIP-ON 1/8" X 1/8" X 1/8" ZS-BRAND PART INSL.
1	2	24			10912	GROMMET RUBBER
1	1	23			10912	BARGE ELBOW
1	1	22			10934	PILOT ASSY LP
1	1	21			10934	ORIFICE LP GAS
1	1	21			10934	ORIFICE LP GAS
1	1	20			10934	SCREW PIPE DOG
1	1	19			2316	WASHER FLAT 1/4" X 1/4" X 0.0105 THK
1	1	18			2316	NUT 1/4" X 1/4" X 0.300 SST FULL FINISHED
1	1	17			14618	SCREW PAN HD 1/2" X 1/2" SST
2	2	16			10287	SCREW PAN HD 1/2" X 1/2" SST
3	3	15			10189	SCREW HEX WASHER HD 7/16" X 1/2" ZN
4	4	14			10813	SCREW 1/2" X 1/2" TORX PHA. THRD FORMING ZN
1	1	13			10204	FTG. COUPL. 1/2" X 1/2" JGHT
1	1	12			10271	ELBOW 90° 3/4" X 1/2" BLACK BRONZ.
1	1	11			10845000	IMGE ASSY GEN'L BRNK 1 BARC-5100
1	1	10			10829	GAS LINE PILOT GEN'L
1	1	9			10829	CABLE BURNER ASSY
1	1	8			10829	PILOT ASSY NAT GAS GEN'L
1	1	7			10799	ORIFICE NATURAL GAS
1	1	6			10799	ORIFICE BURNER/IGNITING GEN'L
1	1	5			10730	CLAMP BURNER GEN'L
2	2	4			10878	BURNER INSHOT 3/16" BTU VERTICAL BOLLER
1	1	3			10840	GASLET MANIFOLD VERTICAL BOLLER
1	1	2			10782	MANIFOLD ASSY VERTICAL GAS BOLLER
1	1	1			108840	BACK BURNER ASSY VERTICAL