

ADCRAFT®



RW-E50 Rice Warmer

This manual contains important information regarding your *Admiral Craft* unit. Please read this manual thoroughly prior to equipment set-up, operation and maintenance. Failure to comply with regular maintenance guidelines outlined in this manual may void the warranty. MUST READ!!!

WARNINGS

- Do not touch any hot surfaces
- Do not immerse unit, cord or plug in liquid at any time
- Do not plug or unplug unit with wet hands
- Unit is intended to keep cooked rice warm. Unit will not properly warm cold rice and is not intended to reheat rice
- Unplug cord from outlet when not in use and before cleaning
- Do not move unit when in use
- Plug only into a 3-hole grounded electrical outlet
- Do not operate unattended
- Do not use this unit for anything other than intended use
- Do not use outdoors
- Keep children and animals away from unit
- Always use on a firm, dry and level surface at least 12" from walls or any other obstruction
- Do not use if unit has a damaged cord or plug, in the event the appliance malfunctions, or has been damaged in any manner
- Any incorrect installation, alterations, adjustments and/or improper maintenance can lead to property loss and injury. All repairs should be done by authorized professionals only
- Ensure that the designated power supply is adequate for continual usage and the voltage is correct

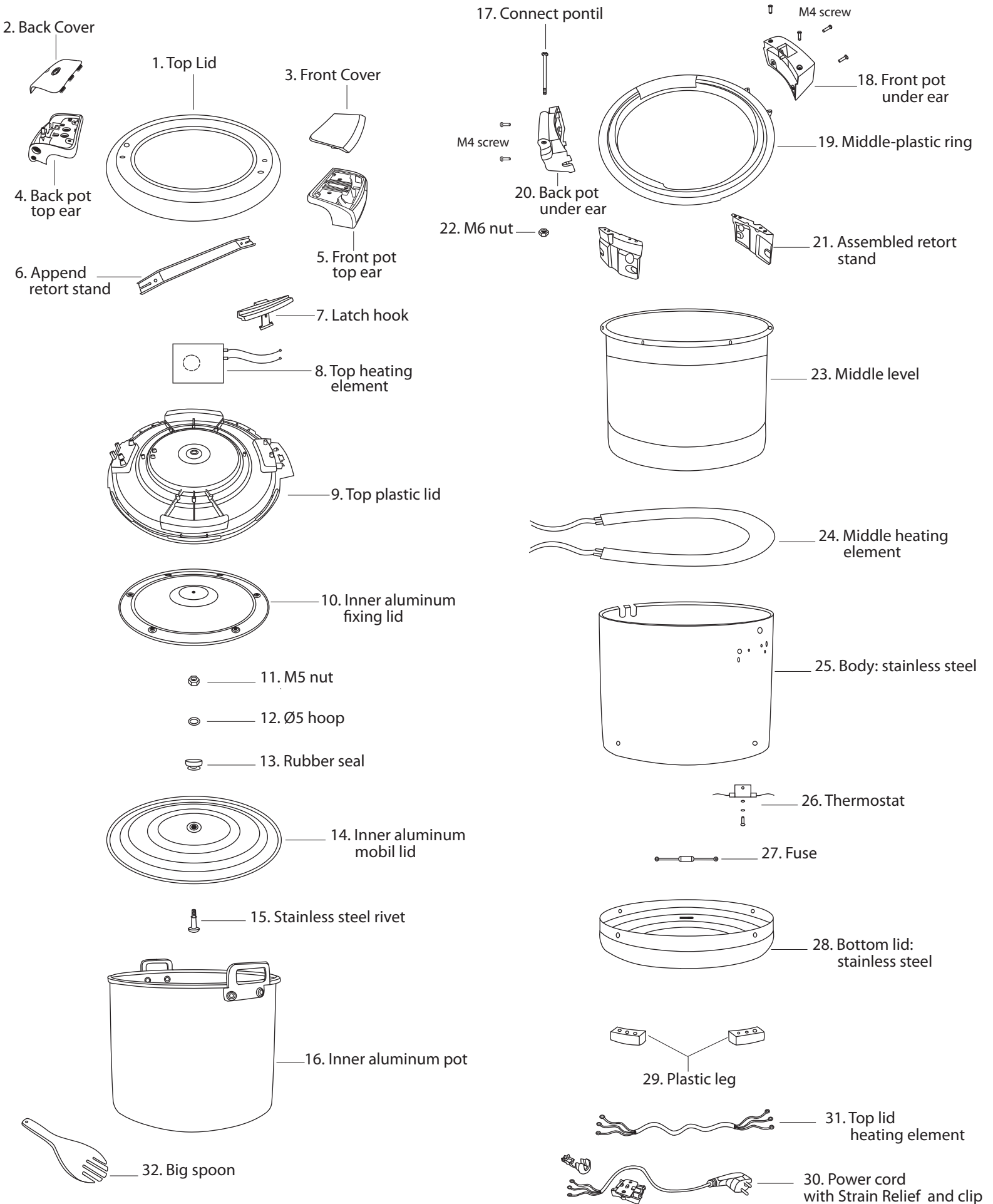
TO USE

1. Before initial use, wash and dry inner pot and lid.
2. Plug in and preheat for 30 minutes.
3. Place cooked hot rice in the inner pot and cover.
4. Use caution when handling, as surface will be hot.
5. It is not recommended to keep rice in the warmer for more than 12 hours.

CLEANING – NOTE: To maintain cleanliness and increase service life, the rice warmer should be cleaned daily. Do not immerse the unit in water or any other liquid. If liquid enters the electrical compartment it may cause a short circuit or electrical shock.

1. Before cleaning or attempting to move, allow warmer to cool down completely then unplug from outlet.
2. Wipe unit with a damp cloth then wipe dry.
3. To avoid damage, do not use abrasive cleaners or scouring pads.
4. If soap or chemical cleaners are used, be sure they are completely rinsed away with clear water immediately after cleaning. Chemical residue could damage or corrode the surfaces of the unit.

RW-E50



Rice Warmer - RW-E50

Reference Number	Part Number	Description
1		Top Lid
2		Back Cover
3		Front Cover
4		Back Pot Top Ear
5		Front Pot Top Ear
6		Append Retort Stand
7		Latch Hook
8	RW-8	Top Heating Element
9		Top Plastic Inner Lid
10		Inner Aluminium Fixing Lid
11		M5 Nut
12		ø5 WasherR
13		Rubber Seal
14		Inner Aluminum Mobile Lid
15		Stainless Steel Rivet
16	RW-16	Inner Aluminum Pot
17		Connect Pontil
18		Front Pot Under Ear
19		Middle-Plastic Ring
20		Back Pot Under Ear
21		Assembled Retort Stand
22		M6 Nut
23		Middle Level
24	RW-24	Middle Heating Element
25		Body
26	RW-26	Thermostat
27	RW-27	Fuse
28		Bottom Lid
29	RW-29	Plastic Leg
30	RW-30	Power Cord, Strain Relief and Clip
31		Top Lid Heating Element
32	RW-32	Big Spoon
33		M4 Screw

VER811

ACE Equipment One Year Limited Warranty

Admiral Craft Equipment Corp. (ACE) warrants its equipment against defects in materials and workmanship, subject to the following conditions:

ACE Equipment is warranted for one year, effective from the date of purchase by the original owner. A copy of the original receipt or other proof of purchase is required to obtain warranty coverage. This warranty applies to the original owner only, and is not assignable.

Should any product fail to function in its intended manner under normal use within the limits defined in this warranty, at ACE's discretion, such product will be repaired, replaced with a refurbished unit, or replaced with a new unit by ACE, after defective unit has been inspected and defect has been confirmed. ACE does not assume any liability for extended delays in replacing any item beyond its control. This warranty does not apply to rubber and non-metallic synthetic parts that may need to be replaced due to normal usage, wear or lack of preventative maintenance.

This warranty covers products shipped into the 48 contiguous United States, Hawaii, and metropolitan areas of Alaska and Canada. Warranty coverage on products used outside the 48 contiguous United States, Hawaii and metropolitan areas of Alaska and Canada may vary. Contact ACE for details at 1-800-223-7750

The following conditions are not covered by warranty:

- Equipment failure relating to improper installation, improper utility connection or supply and problems due to improper ventilation.
- Equipment that has not properly been maintained, damage from improper cleaning, and water damage to controls.
- Equipment that has not been used in an appropriate manner, or has been subject to misuse, neglect, abuse, accident, alteration, negligence, damage during transit, delivery or installation, fire, flood, riot, or act of God.
- Equipment that has the model number or serial number removed or altered.
- Equipment on which the security seal has been broken.

If the equipment has been changed, altered, modified, or repaired without express written permission from ACE, then the manufacturer shall not be liable for any damages to any person or to any property, which may result from the use of this equipment thereafter.

This equipment is intended for commercial use only and this warranty is void if equipment is used in other than a commercial application.

For warranty and non-warranty related issues please call ACE at 1-800-223-7750 ext 3 to speak to technical support. When calling please have your model number, serial number and proof of purchase ready. To purchase replacement parts, receive online technical support or fill out a warranty claim visit www.admiralcraftequipment.com. It is not necessary to contact the place where you originally purchased your product from.

“THE FOREGOING WARRANTY IS IN LIEU OF ANY AND ALL WARRANTIES EXPRESSED OR IMPLIED INCLUDING ANY IMPLIED WARRANTY OF MERCHANTABILITY OR FITNESS FOR PARTICULAR PURPOSES AND CONSTITUTES THE ENTIRE LIABILITY OF ACE. IN NO EVENT DOES THE LIMITED WARRANTY EXTEND BEYOND THE TERMS STATED HEREIN.”